

# **Operating and Installation manual**

## **Wash Program Manager (WPM)**



## Contents

General .....	5
System requirements.....	5
File types .....	6
Installation of Todos USB Driver .....	8
Installation of Wash Program Manager version 5.x .....	9
Installation of WPM Machine Files .....	14
Communication connection.....	17
Compass Control.....	17
Clarus Control.....	18
Menus and functions in Wash Program Manager .....	19
File.....	20
Card (Clarus Control only).....	21
Cable (Compass Control only) .....	22
Settings.....	23
Virtual Reader (Clarus Control only).....	24
Create new wash program .....	25
Save as a wpf file .....	29
Save to physical memory card (Clarus Control only) .....	30
Save to virtual memory card (Clarus Control only).....	31
Save to program device (Compass Control only).....	32
Save to Sequence Database.....	34
Editing an existing wash program .....	35
From a .wpf file .....	35
From a memory card (Clarus Control) .....	36
From a .bin file (Clarus Control) .....	38
Write a .bin file to a memory card .....	38
Open a .bin file using a virtual reader .....	38
In program device (Compass Control).....	40
In a .wpl file (Compass Control) .....	41
In sequence database .....	43
Delete wash program .....	45
.wpf file .....	45
From a memory card (Clarus Control) .....	45
From a .bin file (Clarus Control) .....	46
In a .wpl file (Compass Control) .....	47
In a sequence database .....	47

Program library.....	49
.bin file (Clarus Control).....	49
Create a .bin file.....	49
Write a .bin file to a memory card .....	49
.wpl file (Compass Control) .....	50
Create a .wpl file .....	50
Write a .wpl file to program device.....	51
Sequence Database/Database Tool.....	53
Edit the sequence database .....	53
Add program to the sequence database .....	53
Export programs from the sequence database .....	54
Other .....	55
Convert a .wpl file to a different machine model .....	55
Activate/deactivate program in Compass Control .....	56
Copy a memory card (Clarus Control).....	57
Format a memory card (Clarus Control).....	58
Locked/hardlocked memory card (Clarus Control) .....	59
Troubleshooting .....	60
General .....	60
Maximum and/or minimum values outside the limit values for the relevant machine. ....	60
No machine files in dialog box .....	60
Clarus Control.....	61
Defective card .....	61
WPM cannot read the card. ....	62
Wrong card reader drivers installed. ....	63
Compass Control.....	64
Custom programs disappear during software updates .....	64
The program device does not support the language you selected in your program .....	64
Communication timeout .....	65



## General

Wash Program Manager is a tool that enables you to create bespoke wash programs for washing machines equipped with Clarus Control and Compass Control program devices. In the case of Clarus Control, communication is handled via a memory card (USB card reader), and in the case of Compass Control, via a cable connected to the machine (RS232 serial port).

Before Wash Program Manager can be used for the first time, the software must be installed on your computer.

### **Note:**

**Administrator rights are required to install Wash Program Manager and associated drivers and files.**

## System requirements

In order to communicate with the washing machine's program device, a computer and communication kit compliant with the specification set out below is required:

- PC that meets the following system requirements:
  - Intel Pentium compatible CPU (400MHz or better)
  - Microsoft Windows 2000 or Windows XP (recommended)
  - Windows Explorer 5.0 or higher
  - 64 Mb RAM (256 Mb recommended)
  - 20 Mb free hard disk space (80 Mb recommended)
  - SVGA display 800 x 600 resolution (1024 x 768 recommended)
  - CD-ROM
  - Windows compatible mouse
  - An available USB port (for Clarus Control) and an available RS232 serial port (for Compass Control).

In addition, Compass Control program devices must also be loaded with base software

- item no. 432669904 vers. 3.27 or later.
- item no. 432669701 vers. 2.63 or later.

In addition, the following is also required:

- Wash Program Manager kit consisting of:

For Clarus Control - Wash Program Manager Software (WPM 5.0)

- Electrolux USB card reader (Todos Argos Mini II, with Electrolux-specific software)
- 5 memory cards.

For Compass Control

- Wash Program Manager Software
- Null modem cable
- Adapter for connection to Compass Control program device.

## File types

Wash Program Manager works with five different file types in accordance with the following:

- \*.mac Machine file for specific machine<sup>1</sup>. Contains factory-created modules with menus and parameters adapted for the selected machine. Updated via the ELS website.
- \*.wpl Specific wash program file<sup>1</sup>, enabling bespoke wash programs to be saved to hard disk. The file is locked to a specific machine model, but can be converted.
- \*.seq Database file<sup>1</sup> and <sup>2</sup>
- \*.bin File containing the program library for Clarus Control. This is normally stored on the computer's hard disk and can be written to a memory card.
- \*.wpl File containing the program library for Compass Control. This is normally stored on the computer's hard disk. The file can also be uploaded to the program device via a cable, but always to the same machine model.

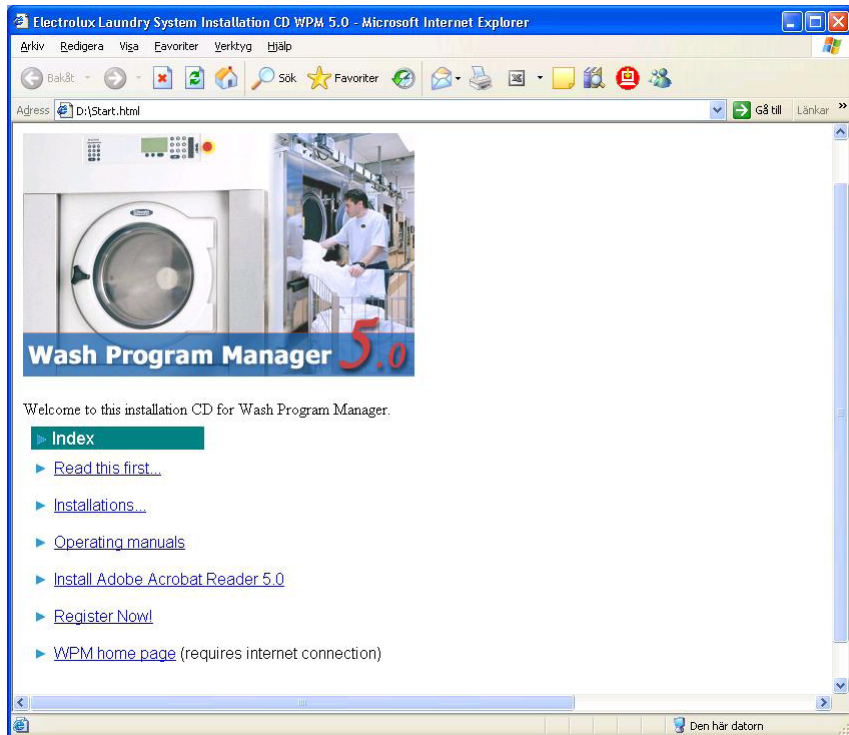
<sup>1</sup> In the case of Clarus Control, backward compatible with WPM version 3.0 and later.

In the case of Compass Control, WPM 5.0 or later is required.

<sup>2</sup> A \*.seq file created in WPM 5 or later cannot be opened in earlier versions.

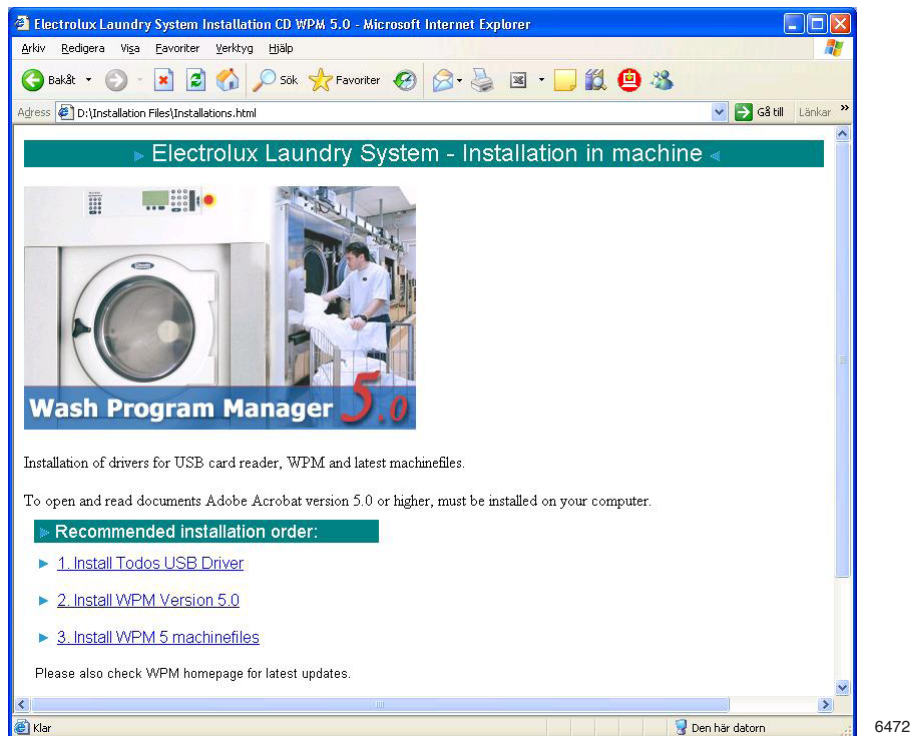
## Installation of Wash Program Manager

- Insert the CD in your computer's CD-ROM drive. The CD will run automatically, bringing the following start menu up on screen:



In addition to the WPM installation files, this menu also holds the following information:

- **Read this first-** containing information about the program's version number and system requirements, along with details of new features in the software and machine files
- User guide in all available languages in PDF format.
- Adobe Acrobat Reader installation file.
- Registration form.
- Link to the WPM website (requires Internet connection).
- Select **Installations**. The following menu will appear on the screen.



The menu contains three installation files. We recommend that the installations are carried out in the specified order.

## Installation of Todos USB Driver

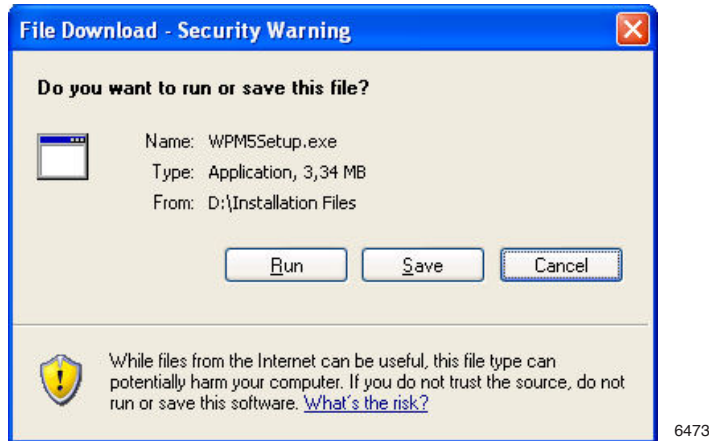
- Select **Install Todos USB Driver** and follow the on-screen instructions.

### Note:

**These drivers must be installed correctly in order to enable WPM to use an Electrolux USB card reader at a later point.**

## Installation of Wash Program Manager version 5.x

- Select **Install WPM Version 5.x**.



Select whether you want to save the installation file to your computer's hard disk to run it from there or to run the installation file direct from the CD. We recommend that run the file from the CD.

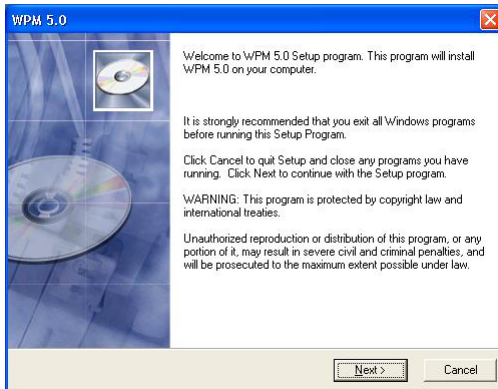
When you run the installation file, a security warning will appear notifying you that the file has been issued by a publisher unknown to Microsoft.



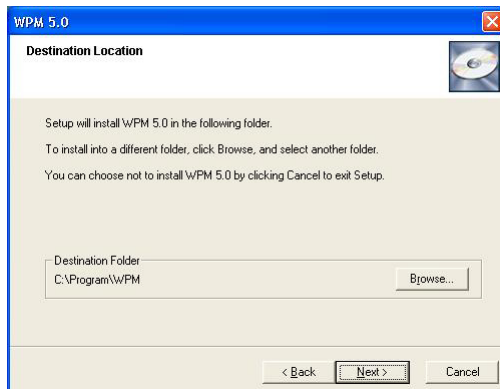
- Click **Run**.

## Wash Program Manager

- The installation wizard will now execute and prepare the installation. Click **NEXT** to go to the next step.

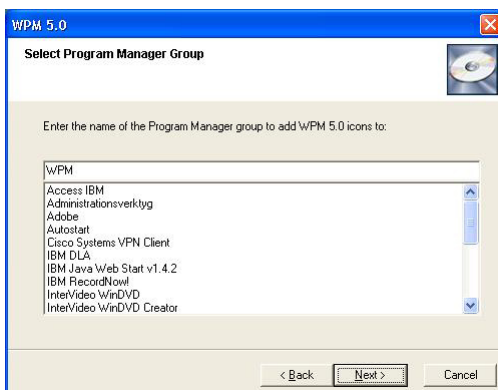


6475



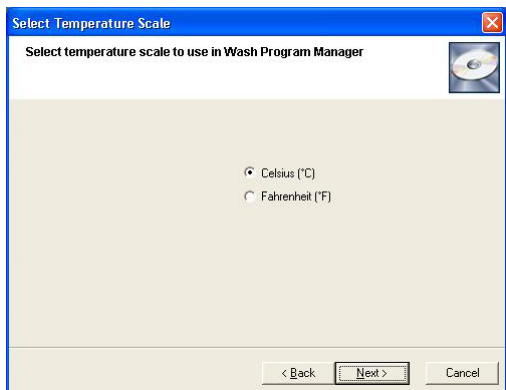
6476

Clicking **NEXT** will install Wash Program Manager (WPM 5.x) in the suggested folder on your computer. If you want to install the program in another location, click **BROWSE**, specify the new search path and click **NEXT**.



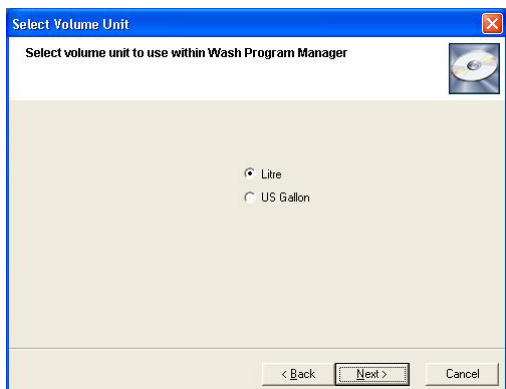
6477

- Specify the program group to which you want to add the WPM 5.x icon and click **NEXT**. (WPM is the default folder.)



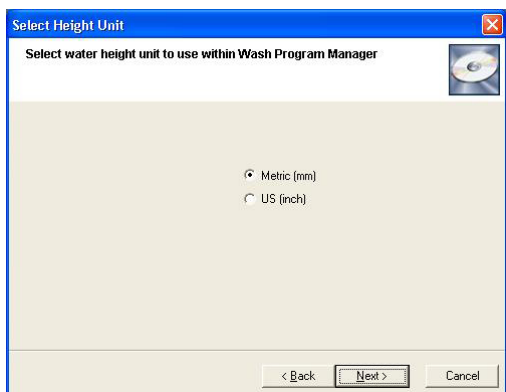
6478

- Select the required temperature scale and click **NEXT**.



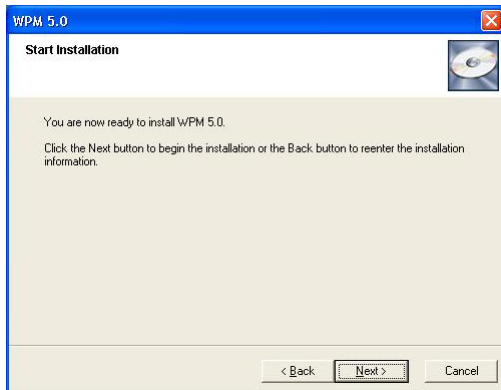
6479

- Select the required volume unit and click **NEXT**.



6480

- Select the required water height unit and click **NEXT**.

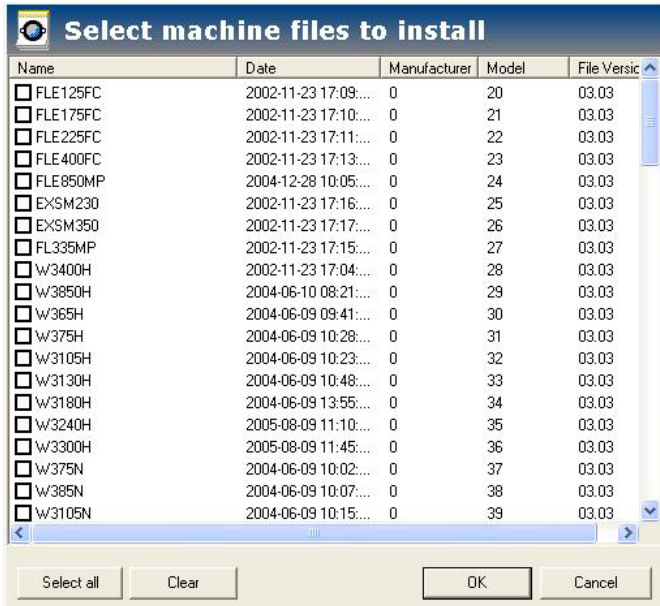


6481

- Click **NEXT** to go further into the installation settings options or click **BACK** to change any of the settings before the installation process starts.

If the installation file is run direct from the CD, the machine files will be installed on your computer automatically and the menu shown below will appear on the screen.

However, if you have opted to run the installation file from your hard disk or the Internet, the machine files must be installed separately. Refer to the section entitled **Installation of machine files**. The menu shown below will cancel and be replaced by the finish menu.



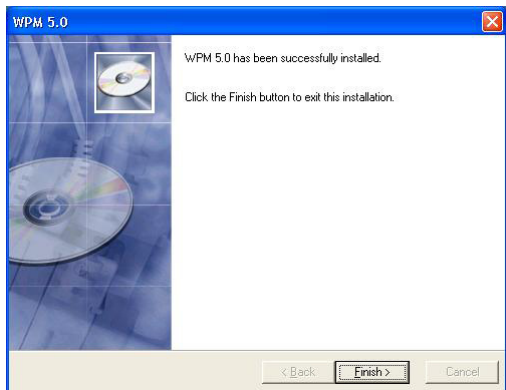
6482

- Select which machine file(s) are to be installed on your computer. To install all machine files, click **SELECT ALL**.



- Then click **OK** to start the installation process, which will take just a few seconds to complete.

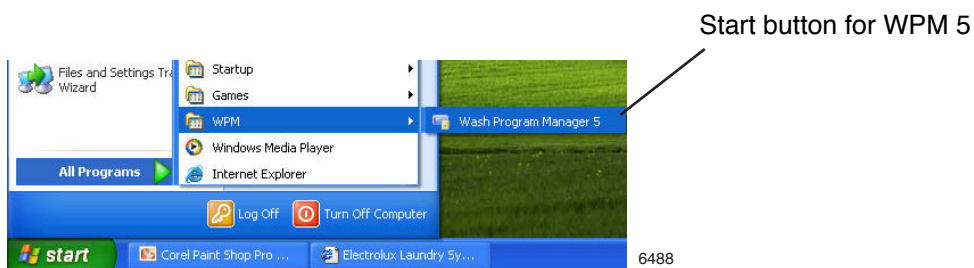
Once installation is complete, the following window will open.



6483

- Then click **FINISH** to complete installation of Wash Program Manager.

Once installed, the program can be launched from the Start menu.



6488

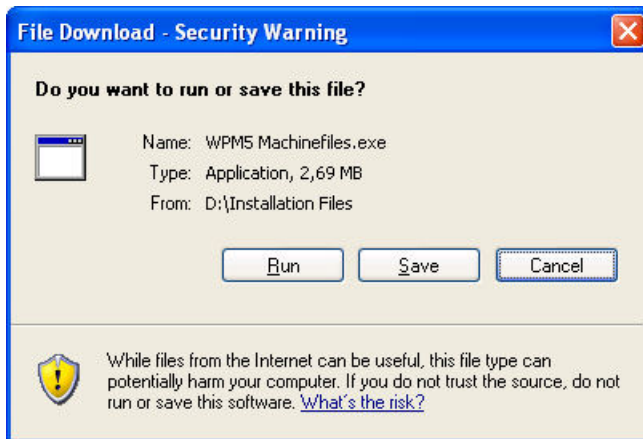
## Installation of WPM Machine Files

### Note:

Machine files only need be installed separately if the WPM 5.0 installation process was started from your hard disk or the Internet. This procedure may also be necessary when adding or updating machine files. (Machine files are installed on your computer automatically when installing the software direct from the CD).

- Select **Install WPM 5 Machinefiles**.

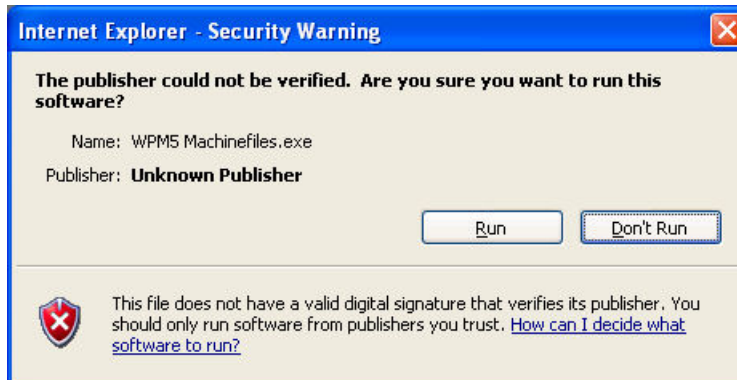
Select whether you want to save the installation file to your computer's



6484

hard disk to run it from there or to run the installation file direct from the CD. We recommend that run the file from the CD.

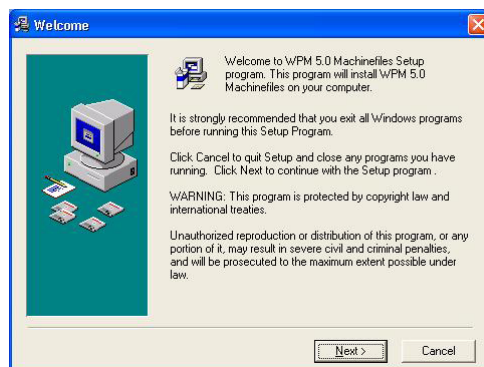
When you run the installation file, a security warning will appear notifying you that the file has been issued by a publisher unknown to Microsoft.



6485

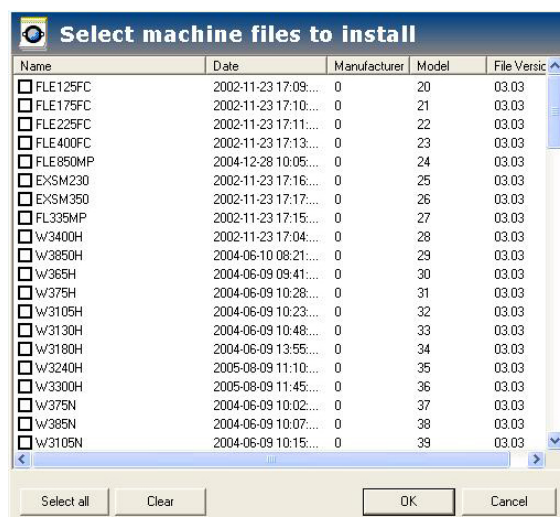
- Select **Run**.

The installation wizard will now execute and prepare the installation.



6486

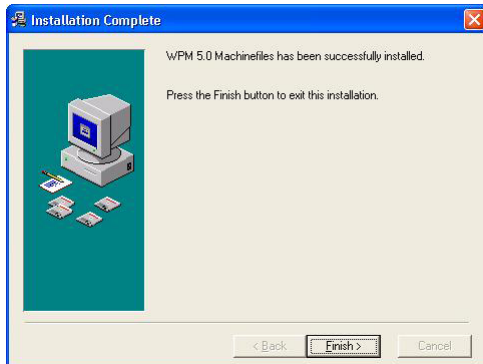
- Click **NEXT** to proceed to the next step.



6482

- Select which machine file(s) are to be installed on your computer. To install all machine files, click **SELECT ALL**.

- Then click **OK** to start the installation process, which will take just a few seconds to complete. Once installation is complete, the following window will appear.



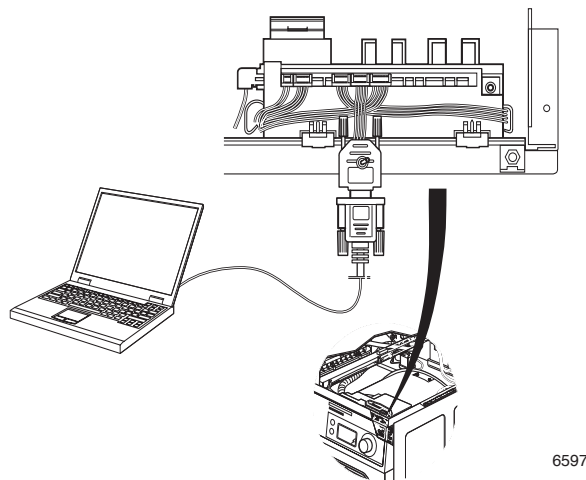
6487

- Click **FINISH** to complete the installation of Wash Program Manager machine files.

## Communication connection

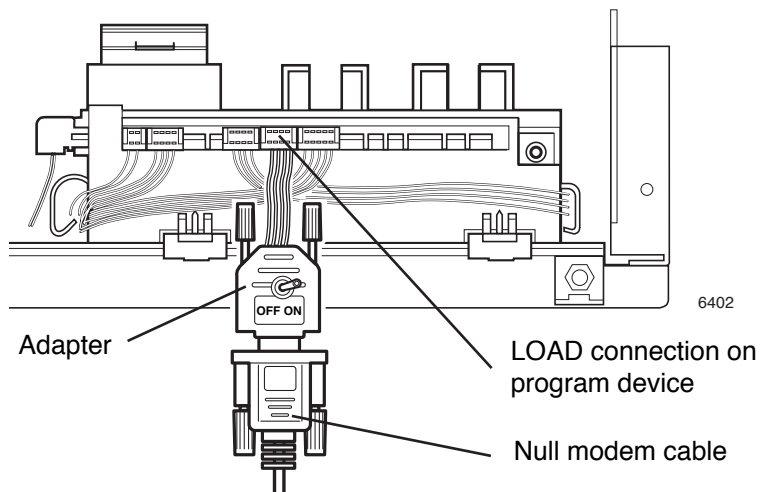
### Compass Control

- Cut the power supply to the washing machine.
- Remove the top panel from the washing machine.
- Connect the null modem cable to a free serial port on your computer (COM 1 is the program default).



6597

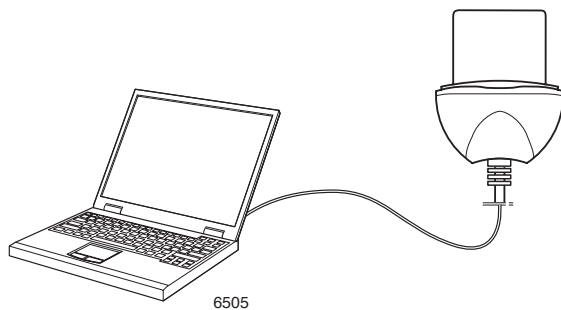
- Connect the adapter's cable contact to the null modem cable.
- Connect the adapter's edge connector to program device contact P-LOAD (con6) using the cables to the front of the machine.



- Set the adapter switch to the OFF position.
- Turn on the power to the washing machine.

### Clarus Control

- Connect an Electrolux USB card reader (Todos Argos Mini II) to a USB port on the PC.

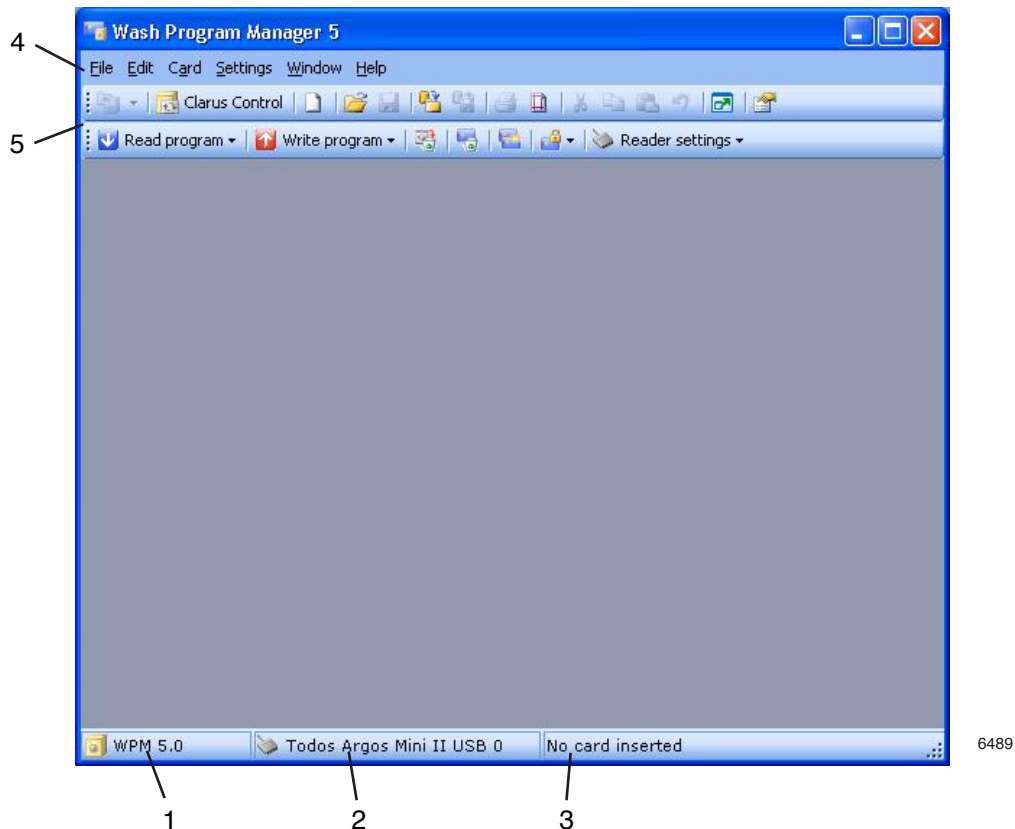


Communication between PC and program device takes place via memory card.

## Menus and functions in Wash Program Manager

Launch the program from the Start menu.

Once the program has been launched, the start menu will appear on the screen.



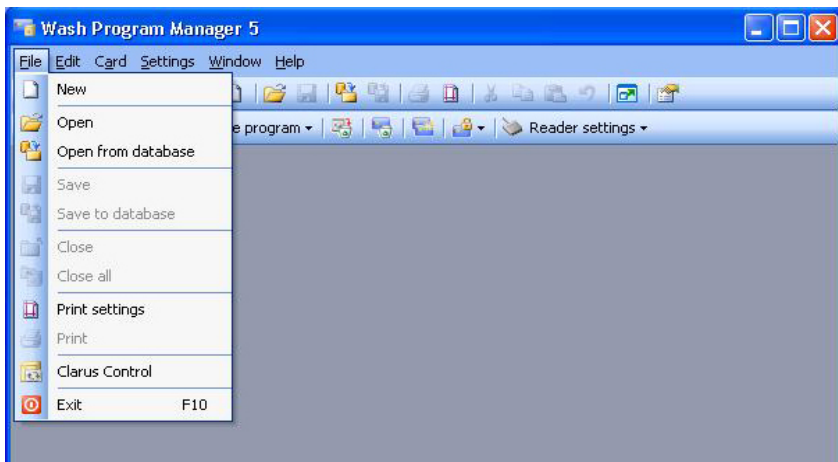
An information bar appears along the bottom edge of the window with information about:

- Program name (1)
- Communication (2)
  - Clarus Control - Connected card reader (Todos Argos Mini II USB)
  - Compass Control - COM port selected (COM 1 default)
- Storage capacity (3)
  - Clarus Control - Space available on connected memory card
  - Compass Control - Transfer speed of communication with washing machine program device (default 57600).

The menu bar (4) contains a number of sub-menus: **File**, **Edit**, **Card/Cable**, **Settings**, **Window** and **Help**. The functions featured in the File, Card, Cable and Settings menus are described in their respective sections in this document. The Edit, Window and Help menus contain standard Windows functions and are not covered in this manual.

The toolbars (5) below the menu bar contain buttons for the most commonly used functions in the program.

## File



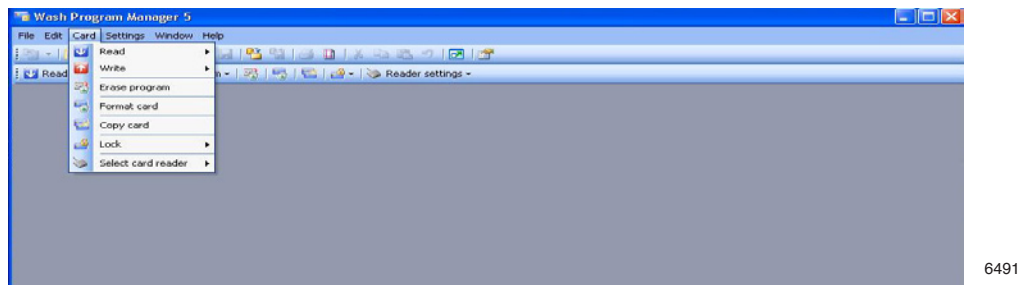
6490

**File** is used to:

- Create a new program
- Open a program file for editing
- Specify print settings
- Configure WPM with the current program device (Clarus Control/Compass Control).



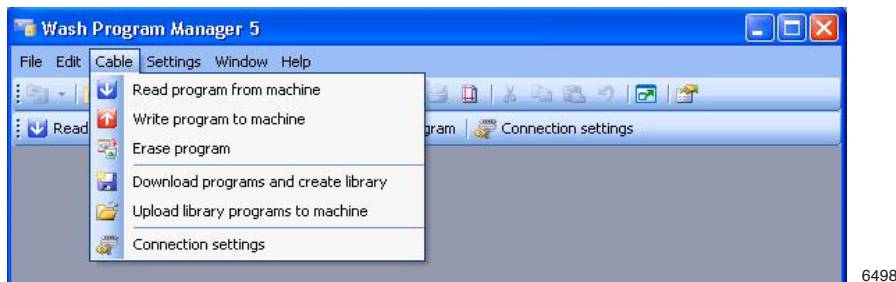
## Card (Clarus Control only)



This function is used to:

- Read programs from a memory card or write a memory card to a .bin file.
- Write programs to a memory card or write a memory card from a .bin file.
- Delete programs from a memory card
- Format a memory card (refer to section "Other").
- Lock memory card (refer to section "Other").
- Select active card reader (Electrolux USB card reader or virtual card reader)

## Cable (Compass Control only)



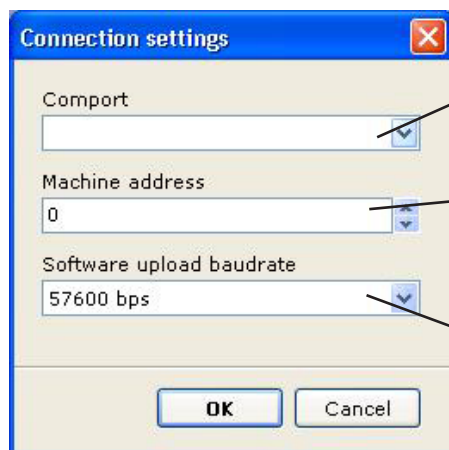
6498

### Note:

**The washing machine must be powered up and the communication cable between the PC and program device must be connected. The adapter switch must be in the OFF position.**

This function is used to:

- Read programs from the washing machine.
- Write programs to the washing machine.
- Delete programs from the washing machine.
- Download programs and create program libraries
- Write program libraries to the washing machine.
- Change communication settings



6499

COM port used (default =COM 1)

Machine address, where 0 = connected to individual machine (default). Uploads can always be done using this setting.

There may be up to 127 machines connected in a network. Note that this assumes that the machine and the program are set to the same address.

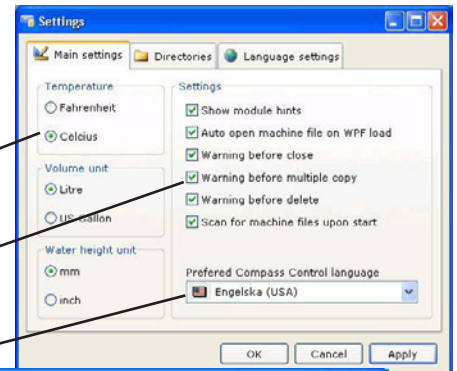
Upload transfer speed (default =57600)

## Settings

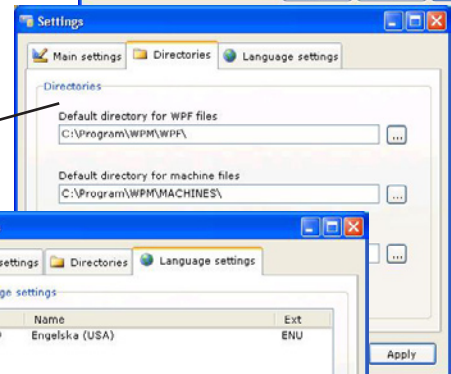


6492

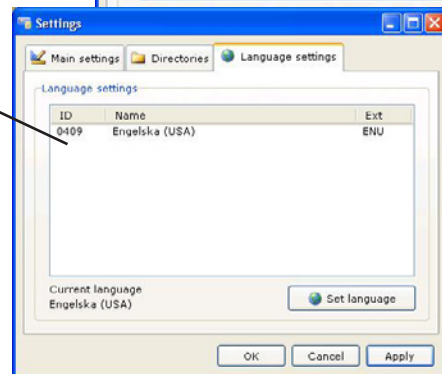
- Settings is used to:
  - Specify units for temperature, volume and water height
  - Specify WPM settings (all options activated by default)
  - Specify the default language when transferring programs to Compass Control
  - Change the search path to system files (default search path recommended)
  - Select the language for use in WPM



6501

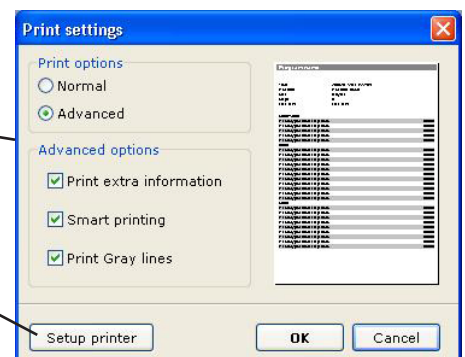


6502



6503

- Print settings is used to:
  - Determine the format of printouts
  - Select the printer to be used



6504

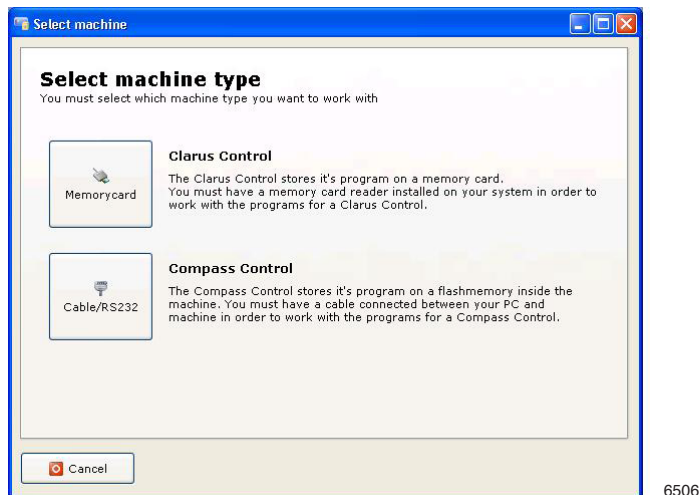
### **Virtual Reader (Clarus Control only)**

The Virtual Reader function enables you to edit a program library (bin files) for machines fitted with Clarus Control program devices direct on your computer instead of having to use a physical memory card and a card reader.

The method for working with a program library using the virtual reader function is described in the relevant virtual card reader section.

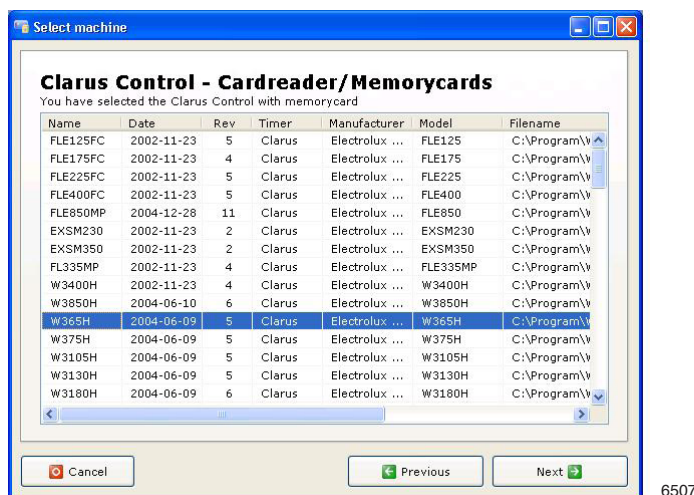
## Create new wash program

- Open **File** menu and select **New** (or click the New program button in the toolbar).



6506

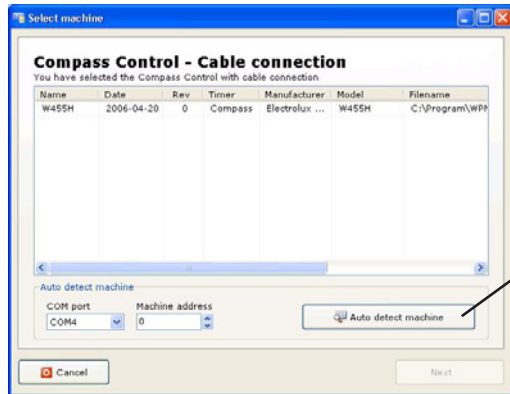
- Select the program device the machine you are to work on is fitted with. A window with all available and installed machine files for the selected program device is displayed. Check the ELS website for the latest machine file updates.



6507

- Select the machine file you want to work with and click **Next**.

Compass Control allows WPM to automatically detect which machine is connected and select the appropriate machine file.



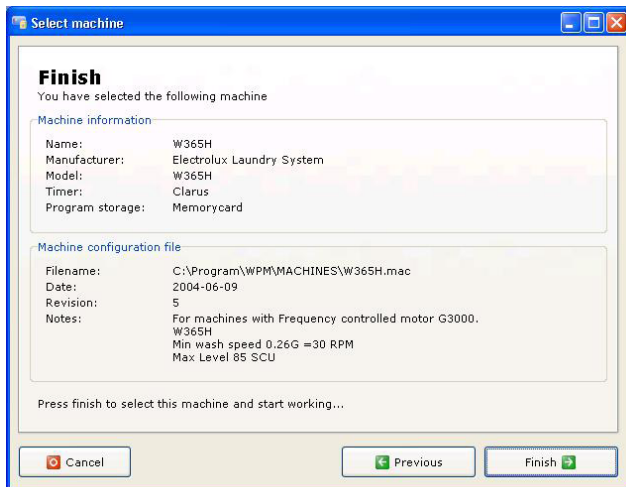
6537

Automatic machine detection

- Click the **Auto detect machine** button.

The above applies provided that WPM is connected to a machine and that the corresponding machine file is installed on your computer.

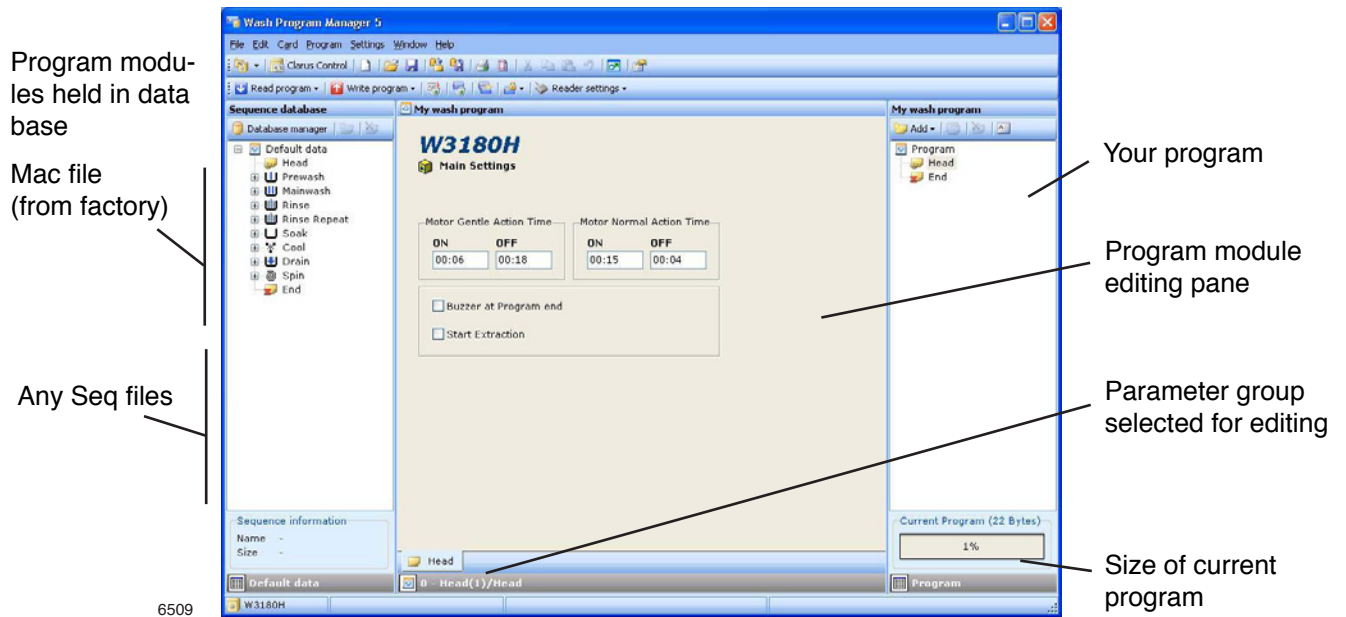
A window then opens showing information about the selected machine.



6508

- Check that the correct machine is selected and click **Finish**.

The edit window will now open, indicating that the program is ready to build a new wash program.

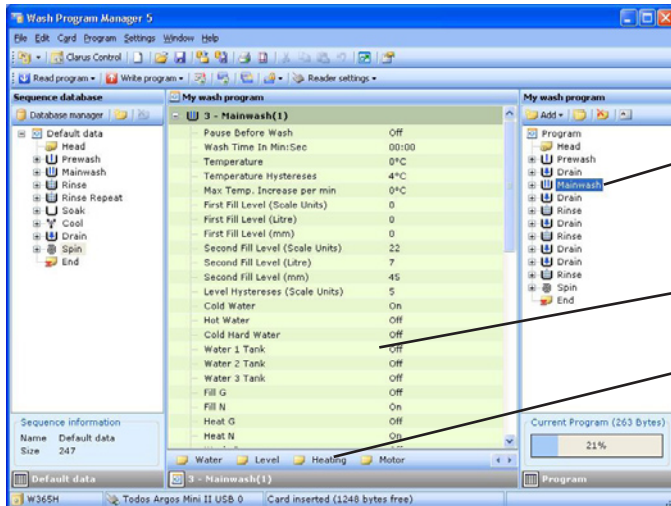


The editing window is made up of three panes. The left-hand pane displays a tree structure with program modules from the factory-created machine file (mac file) for the selected machine, along with any custom created modules from a seq file. The right-hand pane shows a tree structure holding your new programs ("My wash program"). The centre pane is used to display the contents and parameters of a highlighted module and to make required adjustments to the parameters of your program.

- Construct your wash program by highlighting the required modules in the left-hand pane and dragging them to the "My wash program" tree in the right-hand pane.

## Wash Program Manager

- Once all the modules in the program are in place, highlight one module at a time and check the parameter list.



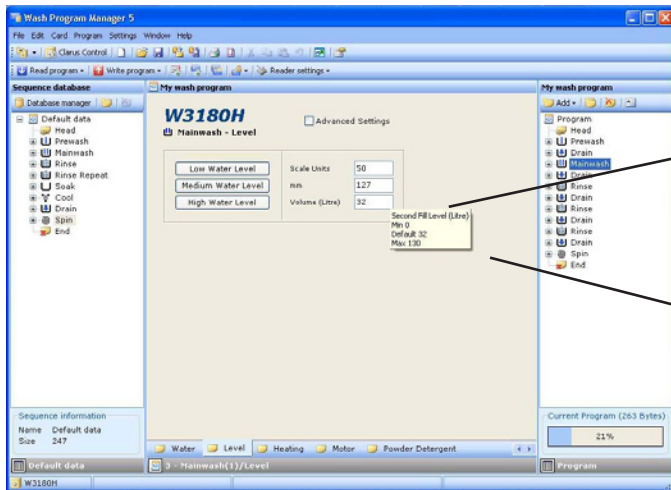
Highlighted program module

Parameter list for the highlighted program module

Module parameter group - editable

6511

- If any parameter is to be changed, click the appropriate parameter group at the bottom of the screen to open the editing window.



Parameter editing box

Box with maximum, minimum and default value

6512

- Edit parameters as required. A box showing the maximum, minimum and default values for the relevant parameter will be displayed automatically if the pointer is held over the editing window.



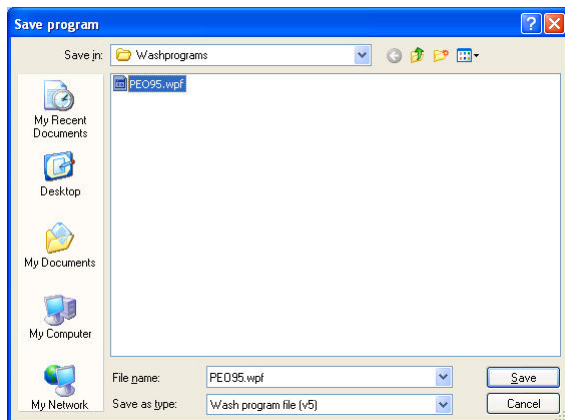
- Once you've finished editing your new program, there are a number of different saving options available:
  - Save as a wpf file to your hard disk.
  - Save to a physical memory card (Clarus Control).
  - Save to a virtual memory card (Clarus Control).
  - Save to program device (Compass Control). To do this, your computer must be connected to a Compass Control program device via a cable.
  - Save to Sequence Database.

## Save as a wpf file

The wpf file is saved to your hard disk and always contains a single wash program. The file is opened automatically using the machine file it was saved with, but it can be converted. Refer to "Converting a wpf file to another machine file" in the Other section of this document.

- Open the **File** menu and select **Save** (or click the Save program button in the toolbar).
- Specify the target folder or create a new folder.

You can then download programs from that folder to create a new or amend an existing program library. Refer to the section entitled "Program libraries".

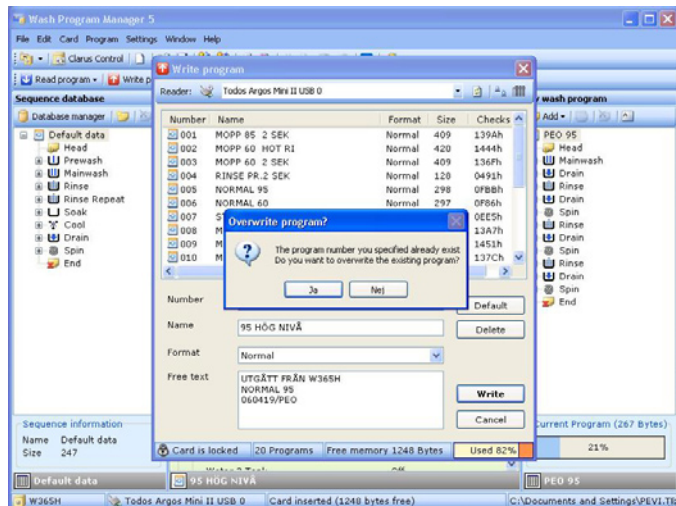


6514

## Save to physical memory card (Clarus Control only)

This function requires a connected Electrolux USB card reader (Todos Argos Mini II) and a memory card.

- Open the **Card** menu and select **Write program to card** (or click the Write program button in the toolbar).



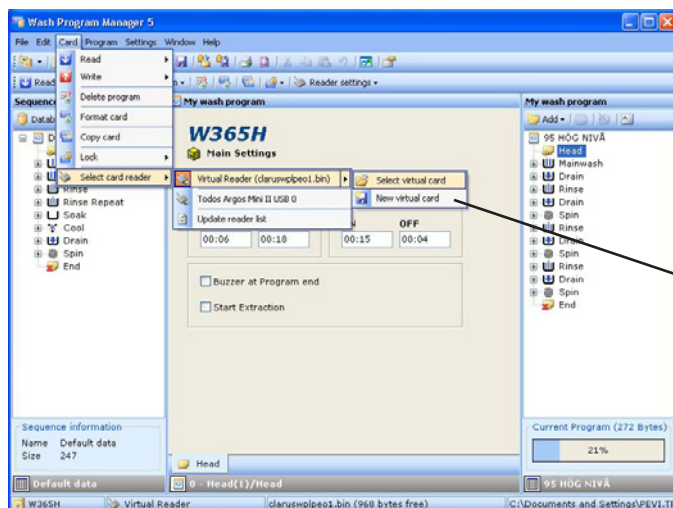
6513

- Select whether to save under a new program number or to overwrite an existing one.

## Save to virtual memory card (Clarus Control only)

This function involves saving the program to a bin file created on your computer's hard disk instead of to a physical memory card. It is used to backup specific cards or to facilitate the distribution of programs or the content of program cards by e-mail.

- Open the **Card** menu and select **Select card reader** (or click the Reader settings button in the toolbar).



Select new or existing card

6520

- Options:
  - Create a new virtual card and save program there.
  - Open an existing bin file and add the program to the file by opening the **Card** menu and selecting **Write program to card** (or click the Write program button in the toolbar. Save the file under a new program number or overwrite an existing file).

## Save to program device (Compass Control only).

This function requires that your computer is connected to a Compass Control program device via a cable.

- Open the **Cable** menu and select **Write program to machine** (or click the Write program button in the toolbar).
- Enter the following information:

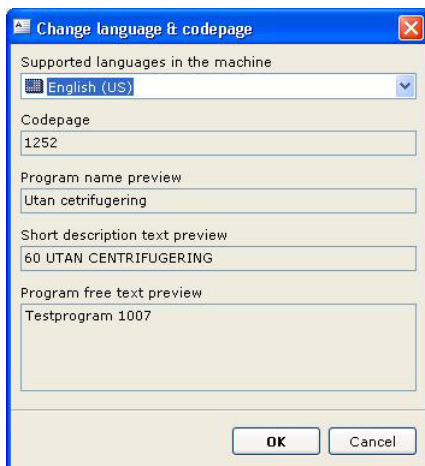
The screenshot shows the 'Write program to machine' dialog box. It has a title bar with standard window controls. Below the title bar, there are two dropdown menus: 'COM port:' set to 'COM4' and 'Machine address:' set to '0'. The main area contains a table with columns: Number, Name, Lock, Active, and Creator. The table lists 10 slots, all currently labeled '<empty slot>'. Below the table, there are four text input fields: 'Number' (empty), 'Name' (containing 'Utan cetrifugering'), 'Short desc.' (containing '60 UTAN CENTRIFUGERING'), and 'Long desc.' (containing 'Testprogram 1007'). To the right of these fields are two buttons: 'Set language' (with a small icon) and 'Set symbol' (with a small icon). Below these are 'Write' and 'Cancel' buttons. At the bottom of the dialog, there is a status bar showing 'COM4/MacID:0', '10 Programs', and 'Used 0%'. The number '6529' is visible in the bottom right corner of the image.

Annotations with arrows pointing to the dialog box:

- Program name**: Points to the 'Name' input field.
- Short description**: Points to the 'Short desc.' input field.
- Long description**: Points to the 'Long desc.' input field.
- Language selection**: Points to the 'Set language' button.
- Program symbol**: Points to the 'Set symbol' button.

- Program name
- "Short description"; max 15 characters (this text will appear as program information in the washing machine display)
- "Long description"; max 7 lines with 20 characters per line.

- If necessary, change the language in which your new program is to be shown in the washing machine display. (This menu also allows you to adjust the program name and information text.)

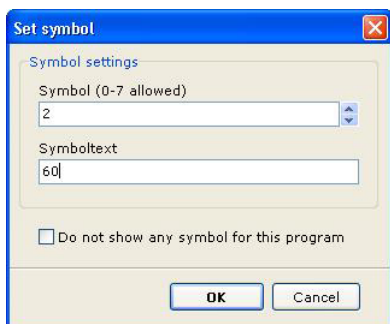


6530

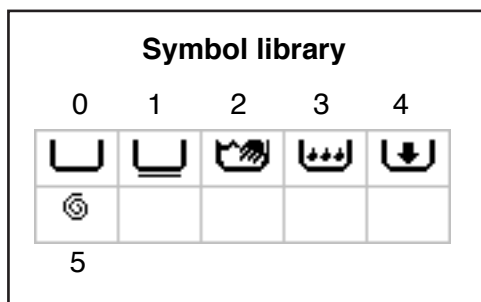
## Note

**Compass Control can normally handle multiple languages in the same piece of software. However, all custom programs are always monolingual and displayed in the language used in their configuration)**

- If necessary, select a symbol and symbol text (max 3 characters) for your program.



6531



6547

- Highlight the program slot (041 - 050) into which you want to place your program.
- Click **Write**. WPM will now write your program to the machine's program device

## Note

**Custom programs written to the program device automatically become active. If the program is to be inactive, it must be deactivated in the program device service program; refer to the service manual for the relevant machine.**

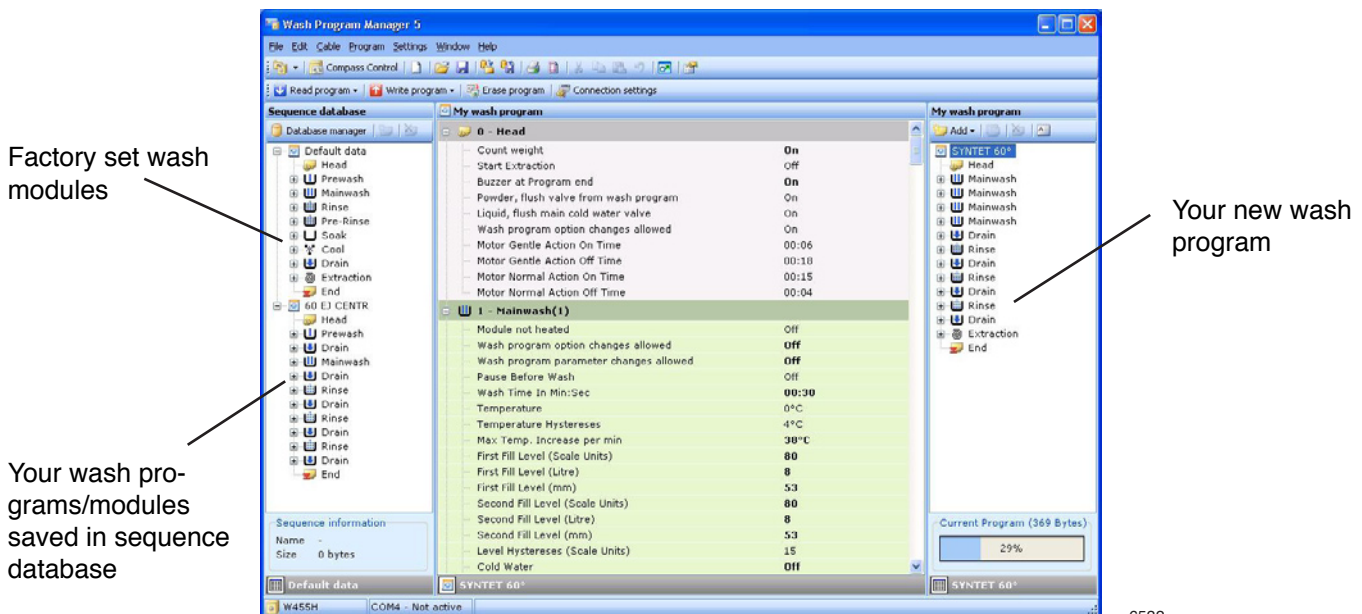
## Save to Sequence Database

The sequence database is ideally suited to act as a temporary buffer for the storage of a specific program or module. Programs or modules stored in the database can be easily reused in new programs. However, it should be noted that modules held in the sequence database are locked to a specific machine model.

The Sequence Database and the Database Tool are described in their entirety in a dedicated section later on in this manual.

- Highlight and drag the program from the "My wash program" pane to the "Sequence database" pane, or right-click and select **Save to database**.

You can also use the **Database manager** function; refer to the section entitled "Sequence Database/Database Manager".



6532

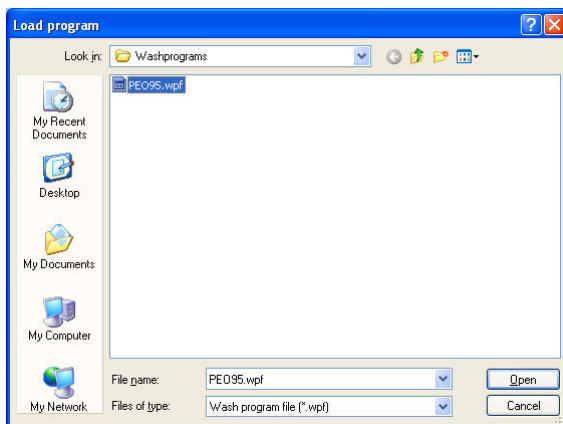
- Your new program is listed after the factory set modules. From your custom program(s), you can, at any point, extract one or more program modules or entire programs to use in the construction of new programs.

## Editing an existing wash program

### From a .wpf file

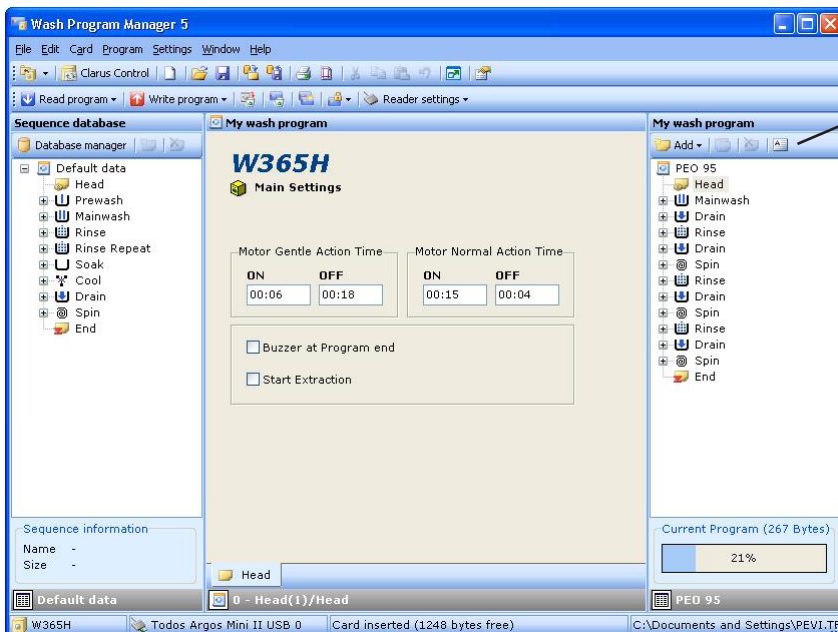
The wpf file is saved to your hard disk and always contains a single wash program. The file is opened automatically using the machine file it was saved with, but it can be converted. Refer to "Converting a wpf file to another machine file" in the Other section of this document.

- Open the **File** menu and select **Open** (or click the Open program button in the toolbar).
- Highlight the program file you want to edit (\*.wpf) and click **Open**.



6516

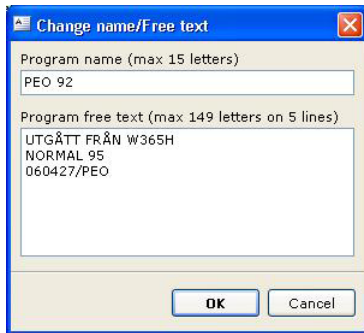
The selected wash program will open and be displayed in the "My wash program" pane.



6515

- Select the program module to be amended and edit in the same way as a new program; refer to the section entitled "Create new program".

- Once your new program is complete, select **Change name/Free text** from the **Program** menu in the menu bar or click the button above the "My wash program" pane.

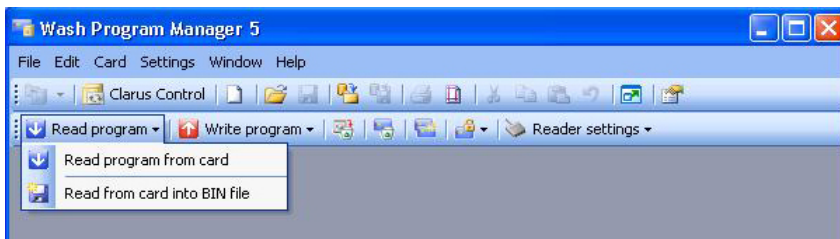


6517

- Change the program name and enter any information text and click **OK**.
- Save the program to your hard disk, the sequence database or a memory card.

## From a memory card (Clarus Control)

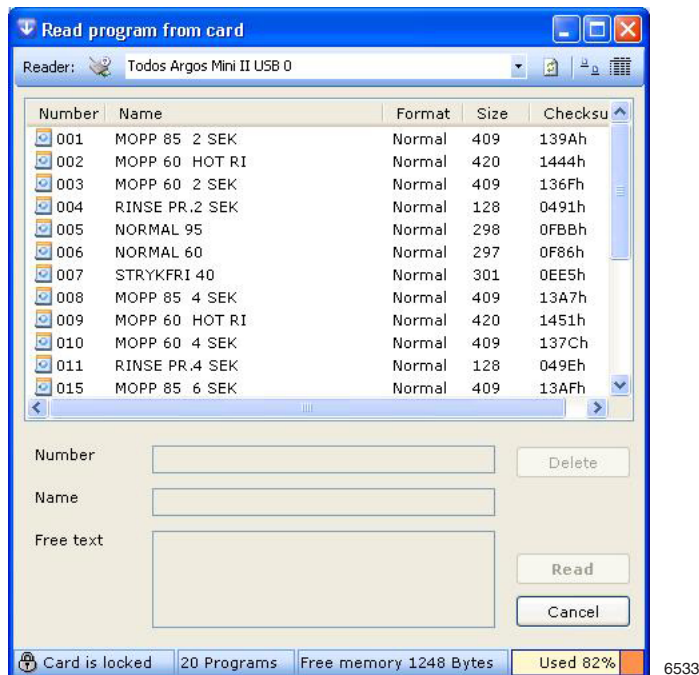
- Open the **Card** menu and select **Read program from card** (or click the Read program button in the toolbar).



6493

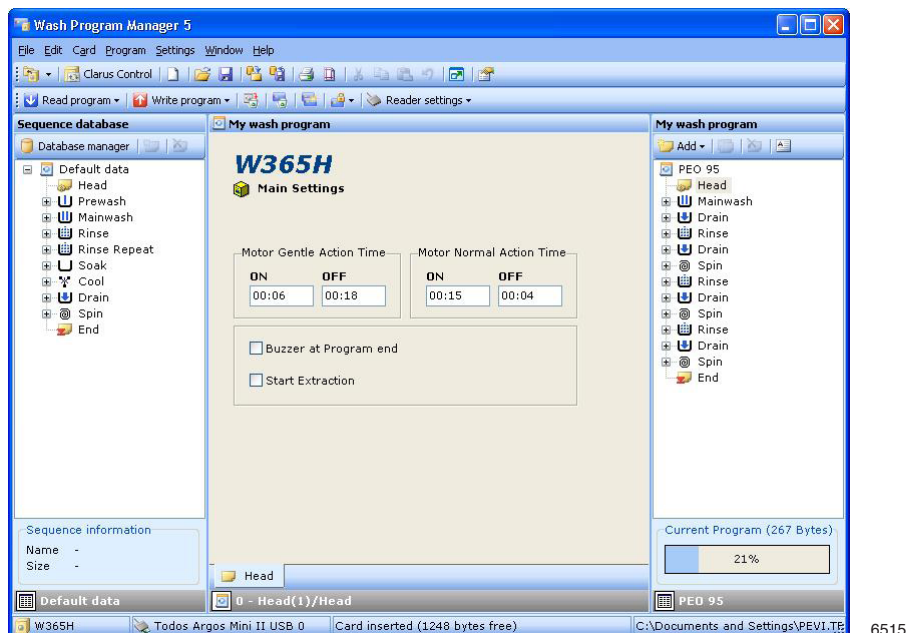
- Select Todos Argos Mini II USB as the reader. A list will now appear showing the programs held on the memory card.





- Select the program to be edited and click **Read**.

The selected wash program will open and be displayed in the "My wash program" pane in the edit menu.



- Select the program module to be amended and edit in the same way as a new program; refer to the section entitled "Create new program".

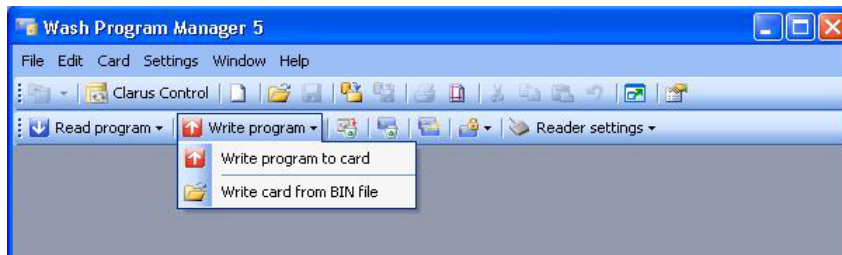
## From a .bin file (Clarus Control)

There are two ways to open a program from a .bin file:

- Write the .bin file to a memory card and then open the program.
- Open the .bin file using a virtual reader

## Write a .bin file to a memory card

- Open the **Card** menu and select **Write program to card** (or click the Write program button in the toolbar).

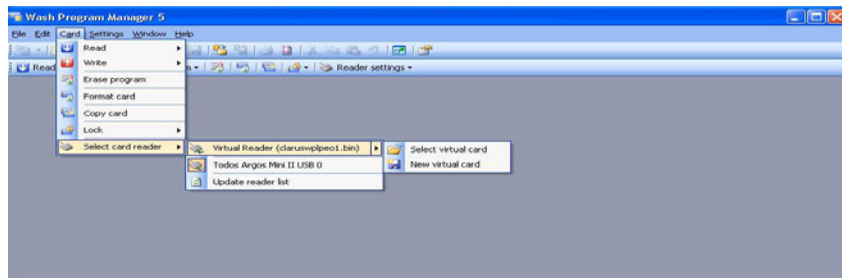


6494

- Then select **Read program from card** and edit the relevant program in accordance with the instructions set out under the heading "From memory card (Clarus Control)" in this chapter.

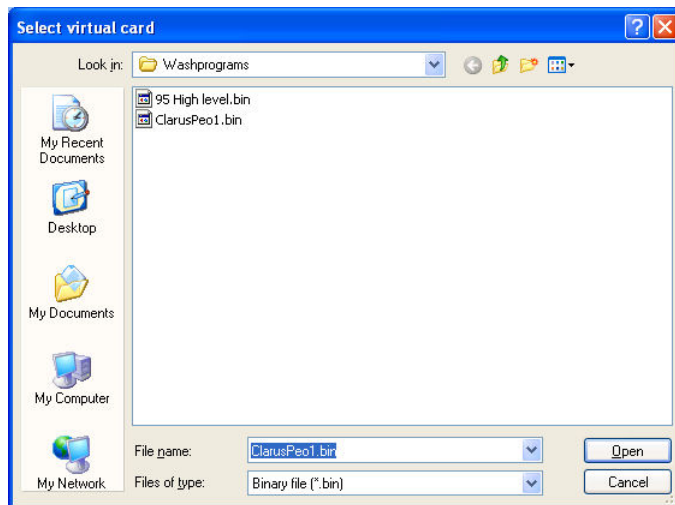
## Open a .bin file using a virtual reader

- Open the **Card** menu and select **Select card reader** (or click the Reader settings button in the toolbar).



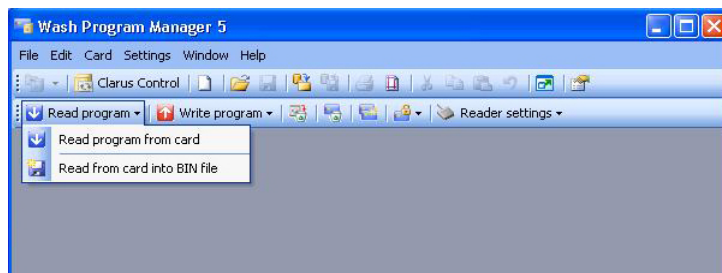
6535

- Set the reader to **Virtual reader** and then select a virtual memory card.



6536

- Highlight the required .bin file and click **Open** to activate the virtual card (the active card is displayed in the bottom row of the menu).



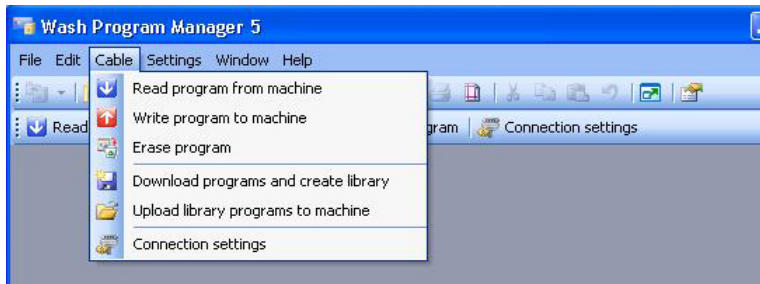
6493

- Open a program by accessing the **Card** menu and selecting **Read program from card** (or click the Read program button in the toolbar).
- Edit the required program in accordance with the instructions set out under the heading "From memory card (Clarus Control)" in this chapter.

### In program device (Compass Control)

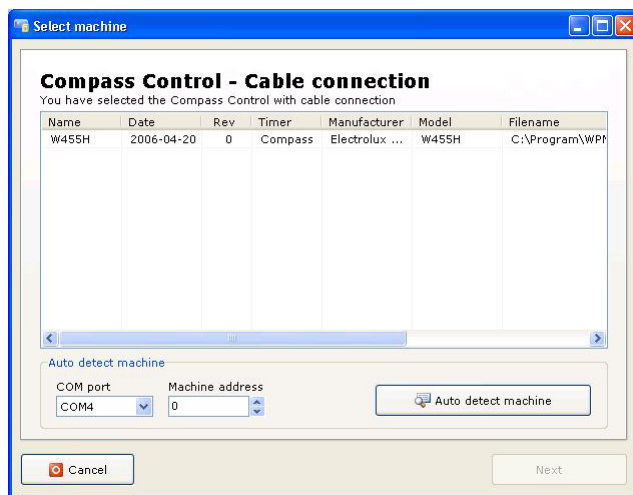
Editing programs for Compass Control is normally done in the program device itself and requires that your computer is connected to the program device (does not apply to .wpf files, which can be edited without a computer being connected)

- Open the **Cable** menu and select **Read program from machine** (or click the Read program button in the toolbar).



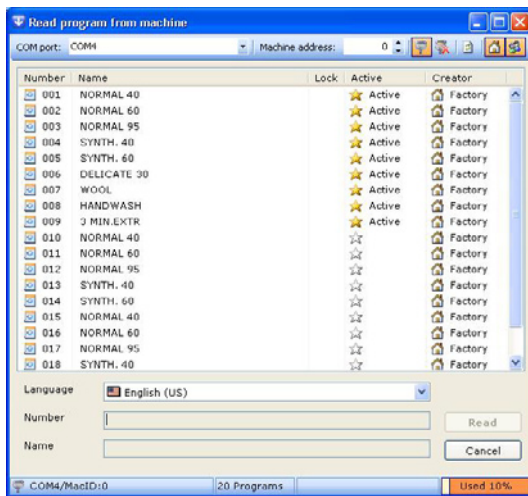
6498

The following menu shows a list of machines with Compass Control program devices



6537

- Select the appropriate machine file in one of the following ways:
  - Click **Auto detect machine** (recommended).
  - Highlight a machine in the list and click **Next**. In the next menu, click **Finish** (to do this, you must know which machine file to select for the machine in question).



6538

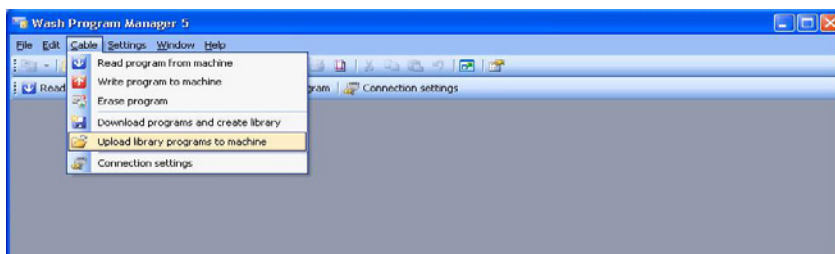
- Highlight the required program from the list and click **Read**.  
The selected wash program will open and be displayed in the "My wash program" pane of the edit menu.
- Select the program module to be adjusted and edit in the same way as you would for a new program; refer to the section entitled "Create new program".

## In a .wpl file (Compass Control)

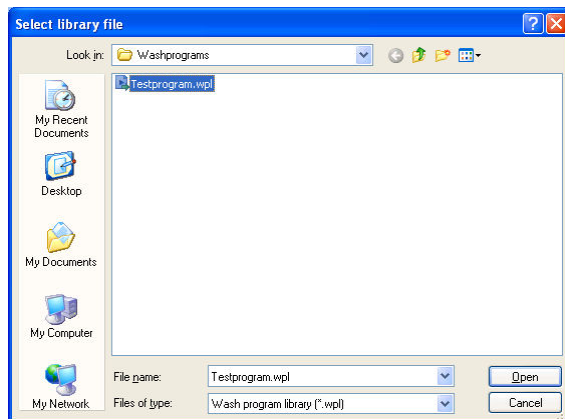
A program cannot be opened directly in a .wpl file. Instead, all editing of Compass Control programs has to be done direct in the program device. Consequently, your computer must be connected to the program device.

This means that the .wpl file must first be downloaded to the program device; refer to the section entitled "Write .wpl file to program device". The file is then edited in accordance with the previous section, "In program device".

- Open the **Cable** menu and select **Upload library programs to machine** (or click the Write program button in the toolbar).

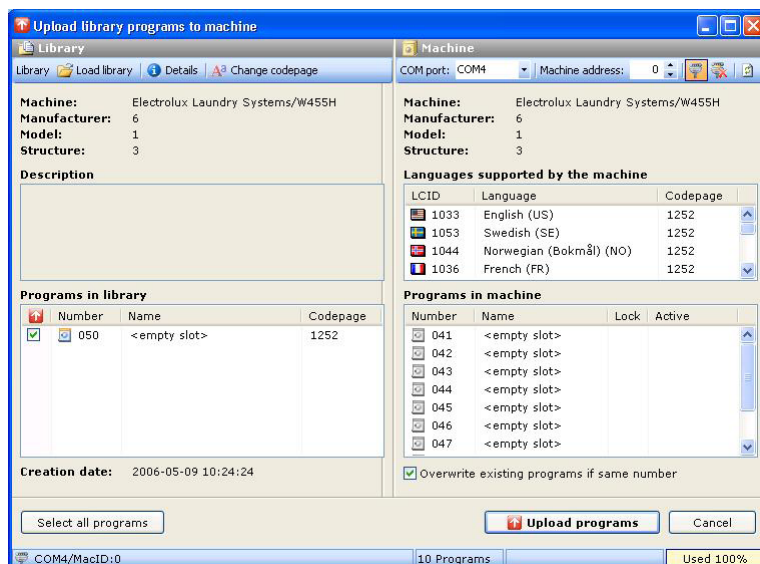


6539



6540

- Highlight the required .wpl file and click **Open**.



6541

- Select one, more or all programs in the .wpl file. In order to be able to write a .wpl file to a machine, the following requirements must be satisfied:
  - information contained in the library (.wpl file) about the machine, manufacturer, model and structure must correspond to that contained in the machine.
  - the Codepage (font table) in the library program must also be in the machine.
- Click **Upload programs**.

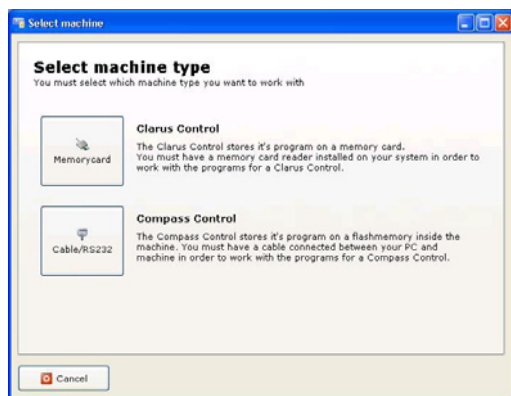
Note that all programs written to the program device are activated automatically. Programs can be deactivated using the program device service program. For more information, refer to the service manual for the relevant machine.

- Select and edit the required program in accordance with the instructions set out in the preceding section entitled "In program device".

## In sequence database

The factory set program modules ("Default data") are locked and cannot be amended or deleted. Custom programs that have been saved in the sequence database can be deleted or edited once they have been moved to "My wash program".

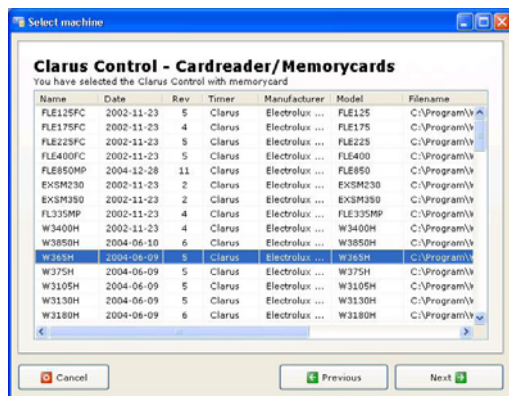
- Open the **File** menu and select **Open from database** (or click the Open from database button in the toolbar).



6506

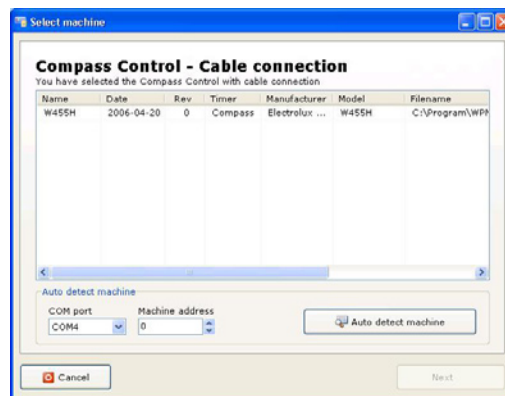
- Select the program device the machine you are to work on is fitted with. A window with all installed machine files for the selected program device will open.

### Clarus Control



6507

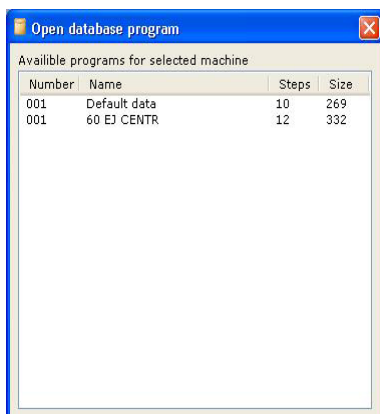
### Compass Control



6537

- Options:
  - In the case of Clarus Control, highlight the machine in which your program is to be used and click **Next**. On the next menu, click **Finish**.
  - In the case of Compass Control, click **Auto detect machine** (recommended) or highlight a machine from the list and click **Next**. On the next menu, click **Finish**.

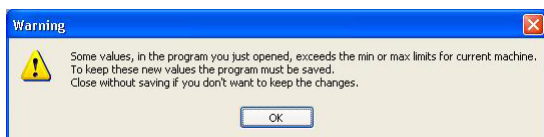




6542

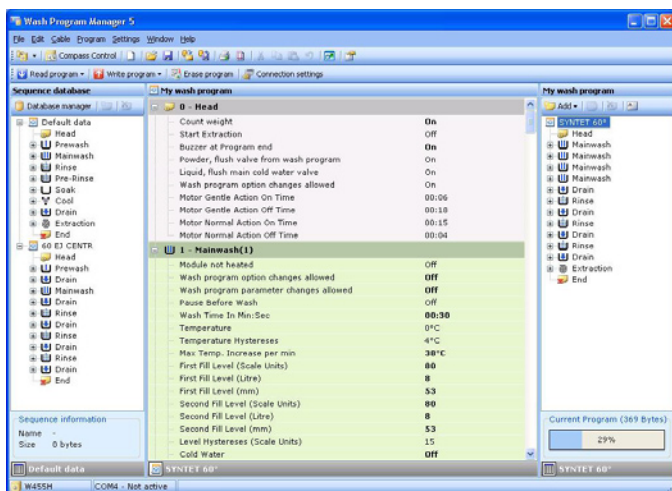
- Highlight the required program from the list of available programs and click **OK**.

If the limit value for the maximum or minimum value of any parameter in the selected program is exceeded for the machine in question, a warning box will appear notifying the user that the parameters have been changed to values that are valid for the machine. The program must be saved in order for the changes to apply.



6543

The selected wash program will open in the "My wash program" pane and be shown in the edit menu.



6532

- Edit and save the program in accordance with the instructions set out under the heading "Create new program"



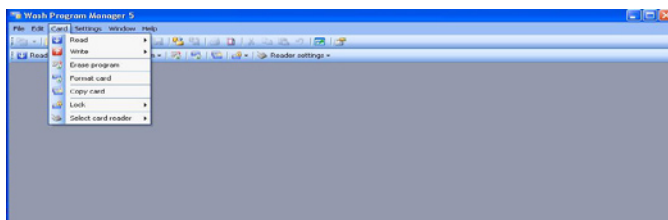
## Delete wash program

### .wpf file

- Open the folder in which the relevant program is located and delete it from the hard disk.

### From a memory card (Clarus Control)

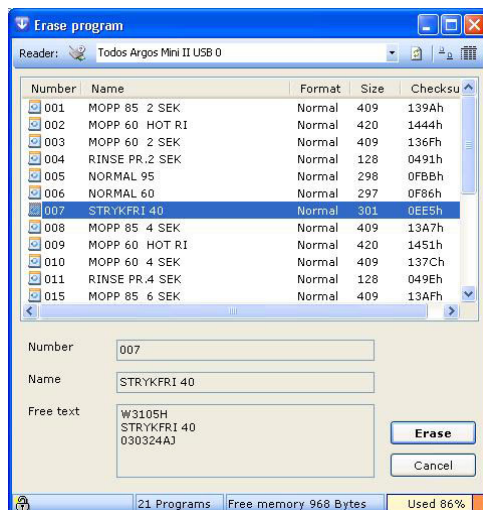
- Select **Todos Argos Mini II USB** as the reader.
- Open the **Card** menu and select **Delete program** (or click the Delete program button in the toolbar).



6491

- From the machine list, select the machine for which the program is to be deleted and click **Next**. On the next menu, click **Finish**.

A list will now appear showing the programs held on the memory card.



6544

- Highlight the program to be deleted and click **Delete**.

### From a .bin file (Clarus Control)

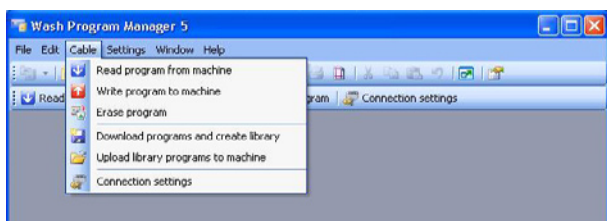
There are two ways to delete a program from a .bin file:

- Write the .bin file to a memory card (refer to the section headed "Write .bin file to a memory card" in the section entitled "Edit an existing program") and delete the required program in accordance with the instruction set out in the previous section, "From a memory card".
- Open using a virtual reader (refer to the section headed "Open .bin file with a virtual reader" in the section entitled "Edit an existing program") and delete the required program in accordance with the instruction set out in the previous section, "From a memory card".

### In program device (Compass Control)

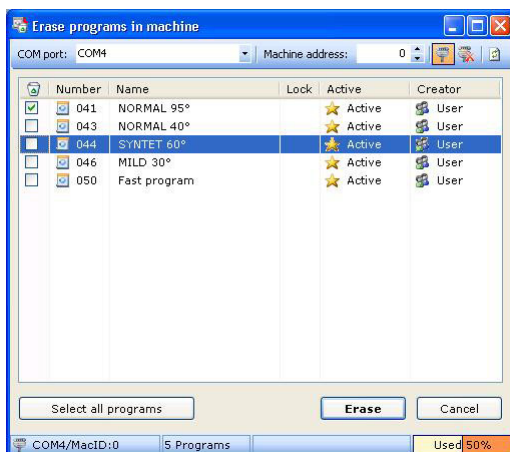
Deletions of programs for Compass Control must be carried out direct in the program device and require that your computer be connected to the program device via a cable.

- Open the **Cable** menu and select **Erase program** (or click the Erase program button in the toolbar).



6498

The following menu shows a list of the machine's programs.



6545

- Highlight the program to be deleted and click **Delete**.

## In a .wpl file (Compass Control)

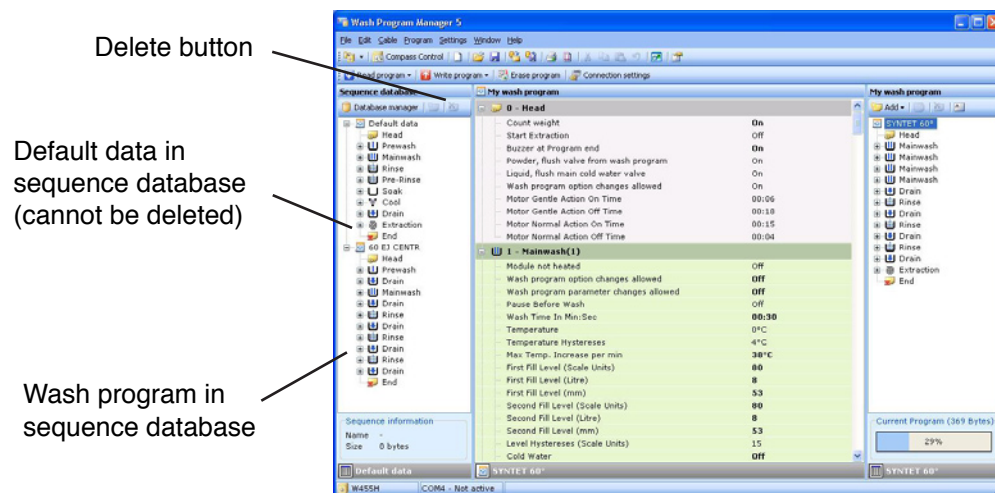
A program cannot be opened directly in a .wpl file. Instead, all editing of Compass Control programs has to be done direct in the program device. Consequently, your computer must be connected to the program device.

This means that the .wpl file must first be downloaded into the program device. Only then can the program be deleted in accordance with the previous section, "In program device".

- For more information about downloading .wpl files to a program device, refer to "In a .wpl file" in the section "Edit an existing program".

## In a sequence database

The factory set program "Default data" is locked and cannot be changed or deleted. Only custom programs saved to the sequence database can be deleted.



6532

- Open the sequence database as described in "In sequence database" in the section "Edit wash program".

- Highlight the program to be deleted from the sequence database and click the **Erase** button or right-click and select **Delete program**.

### Note

**Doing this will delete the entire program from the sequence database.**

If only one or more program steps are to be deleted from the program, it must first be moved to the "My wash program" pane and the deletion undertaken there.

It is also possible to manually delete the .seq file, which is located in the same directory as the .mac file, normally \wpm\machines.

## Program library

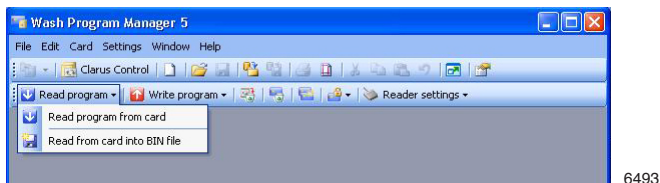
The Program Library function is used to create a backup of a set of custom wash programs on a memory card (Clarus Control) or in a program device (Compass Control). In the case of Clarus Control, the program library is stored as a .bin file, and in the case of Compass Control as a .wpl file.

### .bin file (Clarus Control)

#### Create a .bin file

To create a .bin file (card backup) from a memory card:

- Open the **Card** menu and select **Read from card into BIN file** (or click the Read program button in the toolbar).
- Save the .bin file on your hard disk.

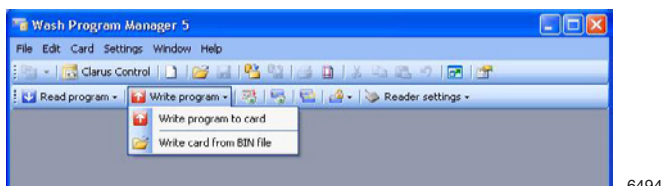


6493

#### Write a .bin file to a memory card

This function is used to restore a backup from your hard disk to a memory card.

- Open the **Card** menu and select **Write card from BIN file** (or click the Write program button in the toolbar).
- Select the appropriate .bin file from your hard disk and click **Open**.



6494

## Edit a .bin file

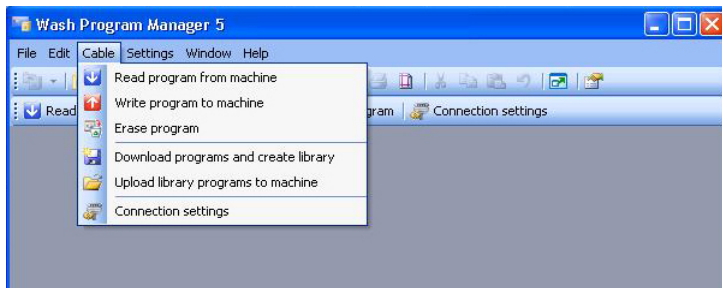
In order to be able to edit a wash program in a .bin file, the file must first be written to a memory card and opened from there, or opened via a virtual reader, and then edited; refer to "From a .bin file" in the section "Edit an existing program".

## .wpl file (Compass Control)

### Create a .wpl file

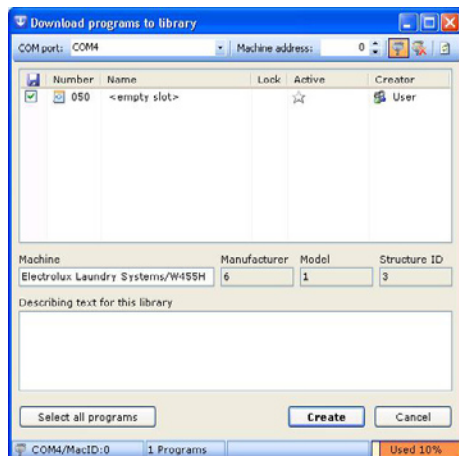
This function requires that your computer is connected to the program device by a cable.

- Open the **Cable** menu and select **Download programs and create library** (or click the Read program button in the toolbar).



6498

The following menu shows a list of the custom programs held in the current program device.



6546

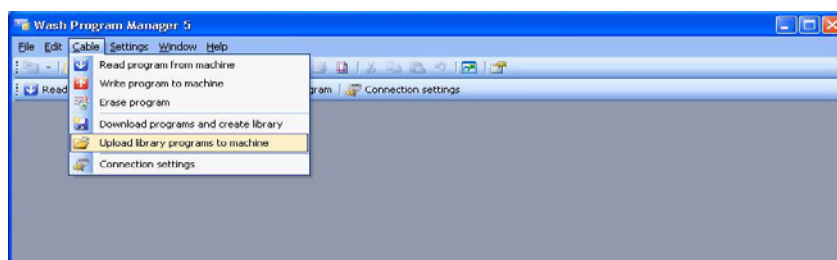
- Select one, more or all programs to be held in the .wpl file. A .wpl file can hold up to 10 custom wash programs (located in program slots 041 - 050 in the program device).
- Enter any descriptive text for the relevant program library.
- Click **Create**.
- Name the .wpl file and save it on your hard disk.

## Write a .wpl file to program device

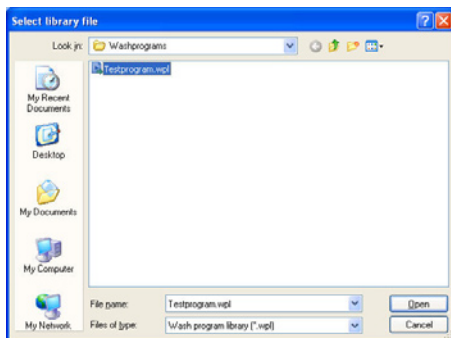
This function requires that your computer is connected to the program device by a cable.

To upload the .wpl file to the program device:

- Open the **Cable** menu and select **Upload library programs to machine** (or click the Write program button in the toolbar).

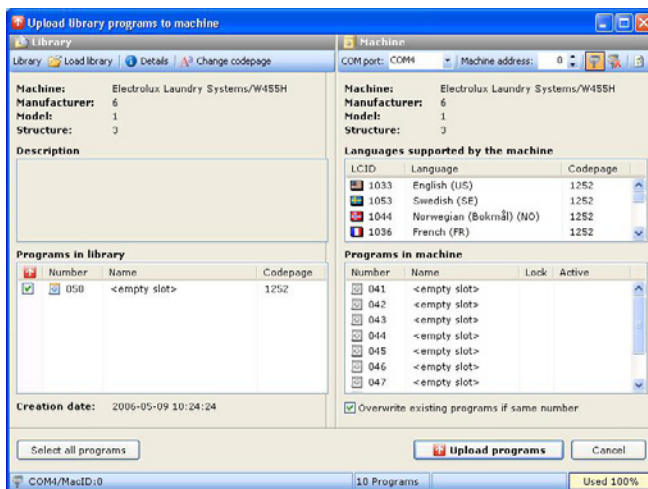


6539



6540

- Highlight the required .wpl file and click **Open**.



6541

- Select one, more or all programs in the .wpl file. In order to be able to write a program library to a machine, the following requirements must be satisfied:
  - information contained in the library (.wpl file) about the machine, manufacturer, model and structure must correspond to that contained in the machine.
  - the Codepage (font table) in the library program must also be in the machine.
- Click **Upload programs**.

The program slots to be written to the program device are indicated in red in the "Programs in machine" pane.

If the "Overwrite existing programs of same number" checkbox is unchecked, programs will only be written to free program slots.

## Note

**All programs written to the program device are activated automatically. Programs can be deactivated using the program device service program. For more information, refer to the service manual for the relevant machine.**



## Sequence Database/Database Tool

The sequence database is used to facilitate the restoration of a module, a number of program steps or an entire wash program for a specific machine. The modules in the sequence database are locked to the selected machine model.

The database tool is used to manage various functions in the sequence database.

### Edit the sequence database

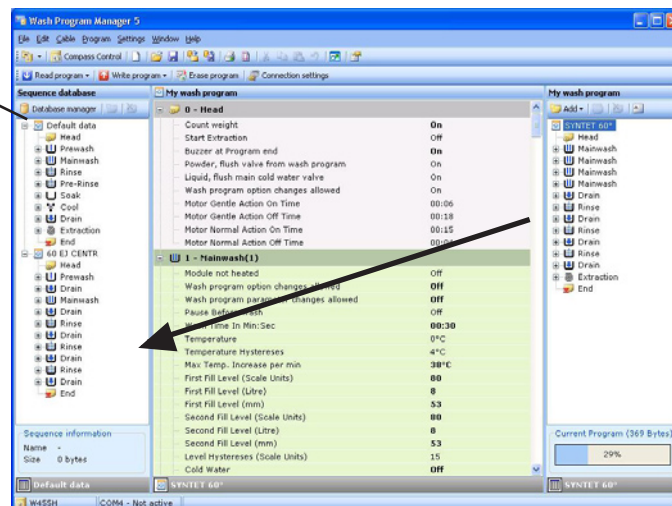
When editing a program in the sequence database the program must first be moved to the "My wash program" pane in the edit menu; refer to "In sequence database" in the section entitled "Edit an existing wash program".

### Add program to the sequence database

Once the program is ready in the "My wash program" pane of the edit menu, it can be saved to the sequence database in one of two ways:

- Drag the program from the "My wash program" pane to the "Sequence database" pane, or right-click the program and select **Save to database**.
- Open the Database Tool and
  - Select **Import program**
  - Open and add the relevant .wpf file (the program file must correspond to the machine model and format).

Data base  
tool



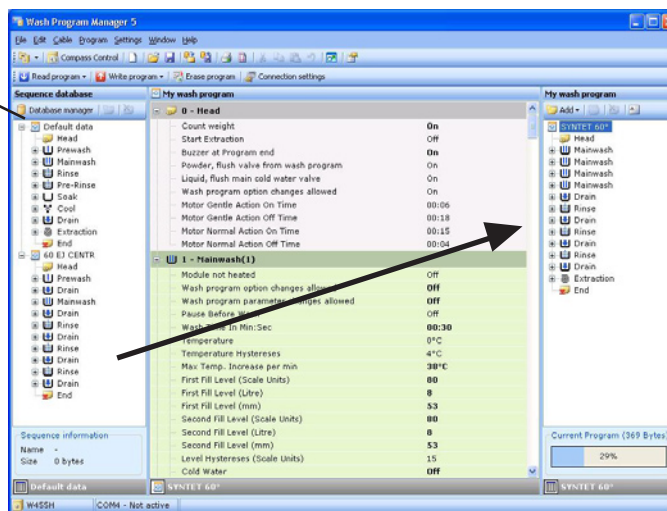
6532

## Export programs from the sequence database

In order to use a program from the sequence database, it must first be exported in one of the following two ways:

- Drag the program from the "Sequence database" pane to the "My wash program" pane, or right-click the program and select **Add steps from database**.
- Open the Database Tool and
  - Select **Export program**
  - Name the .wpf file and save it on your hard disk.

Data base  
tool

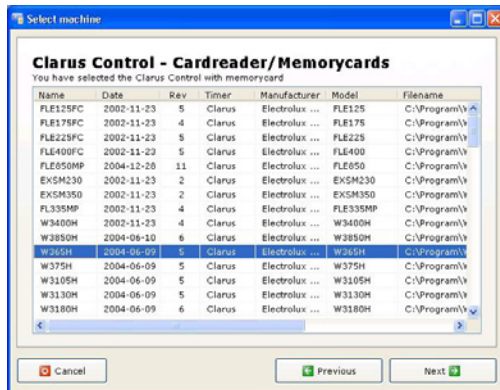


6532

## Other

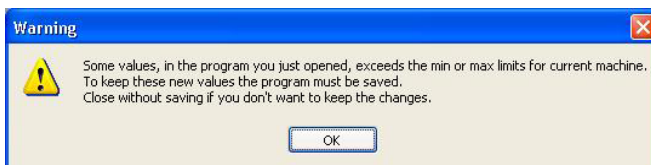
### Convert a .wpf file to a different machine model

- Open the **File** menu and select **Open**.
- Holding down the shift key, select the required .wpf file and click **Open**.
- The **Select machine** menu will now appear.

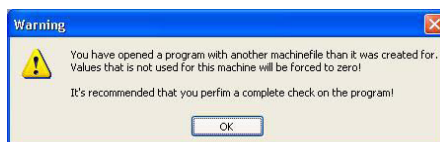


6507

- Select the machine the file is to be converted to and click **Next**. On the next menu, click **Finish**.



6543



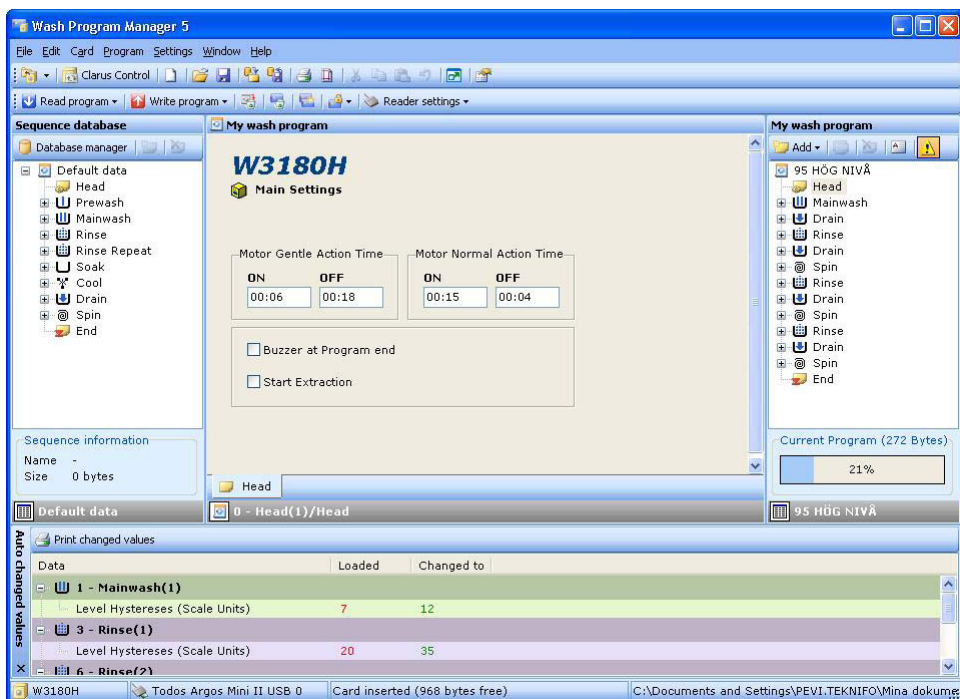
6556

Two warning messages will be displayed, one informing you that the min/max limits for the machine have been exceeded and the second stating that you have opened the program using a machine file that is not the one the program was created with.

## Note

The program automatically converts min/max limits, but other parameters may need to be changed in order to achieve the best wash results and optimal function. It is recommended that you check all parameter values in the program.

- Once the messages acknowledged, the program will open.



6548

The lower section of the edit menu shows the parameters and values they have been automatically converted to (relevant values for the selected machine).

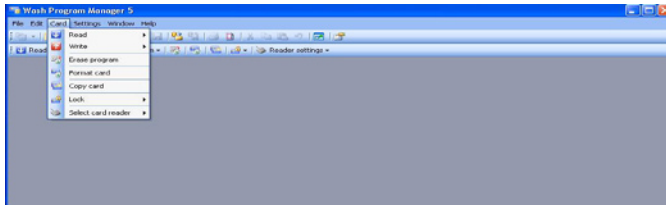
When the wash program is saved, it is converted to the new machine.

## Activate/deactivate program in Compass Control

The procedure for activating, deactivating and sorting custom wash programs is described in the service manual for the relevant machine.

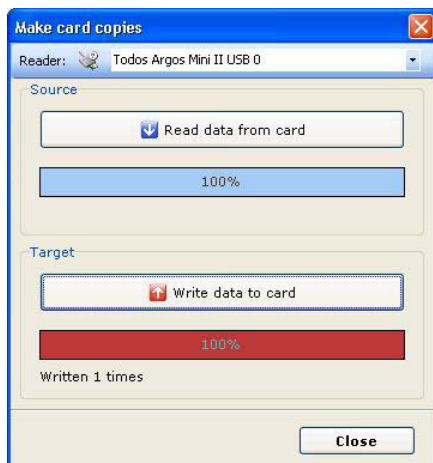
## Copy a memory card (Clarus Control)

- Open the **Card** menu and select **Copy card** (or click the Make copies of card button in the toolbar).



6491

- Click the **Read data from card** button (Source). The program reads the content of the card and dumps it to the computer memory.



6549

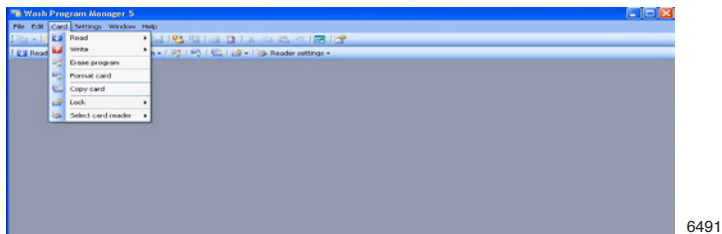
- Remove the card from the reader and insert a new, empty card.
- Click the **Write data to card** button (Target). The program will now write the source card data to the new card.

To make multiple copies of the same source card:

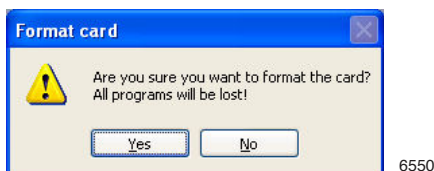
- Insert a new card in the card reader and click **Write data to card**. The window shows how many times the source card has been copied.

## Format a memory card (Clarus Control)

- Open the **Card** menu and select **Format card** (or click the Format card button in the toolbar).



A message appears warning you that all data on the card will be lost during formatting.



- Click **Yes**. This will start the formatting process. If you don't want to format the card, click **No**.

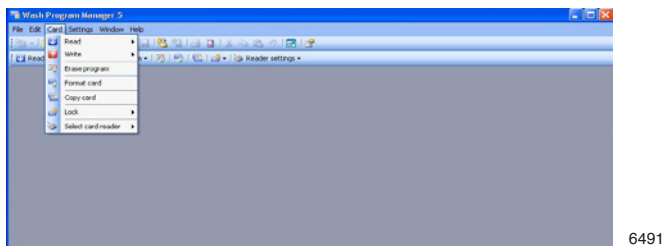
## Locked/hardlocked memory card (Clarus Control)

If a card is 'locked' it means that it is write-protected. The write protection can be removed via the **Lock** menu.

If a card is 'hardlocked' it means that it can only show which programs are held on the card, but not their structure.

Neither locked or hardlocked cards can be edited. Locked cards can be unlocked and then edited.

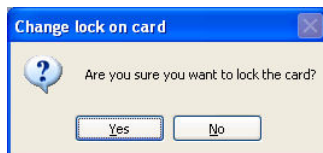
- Open the **Card** menu and select **Lock** (or click the Card lock button in the toolbar).



6491

- Select whether you want to write-protect or hardlock the card

If you decide to write-protect the card, a message will appear asking you to confirm that the card is to be write-protected.



6551

If you decide to hardlock the card, a message will appear warning you that the card cannot be unlocked for reading if it is hardlocked.



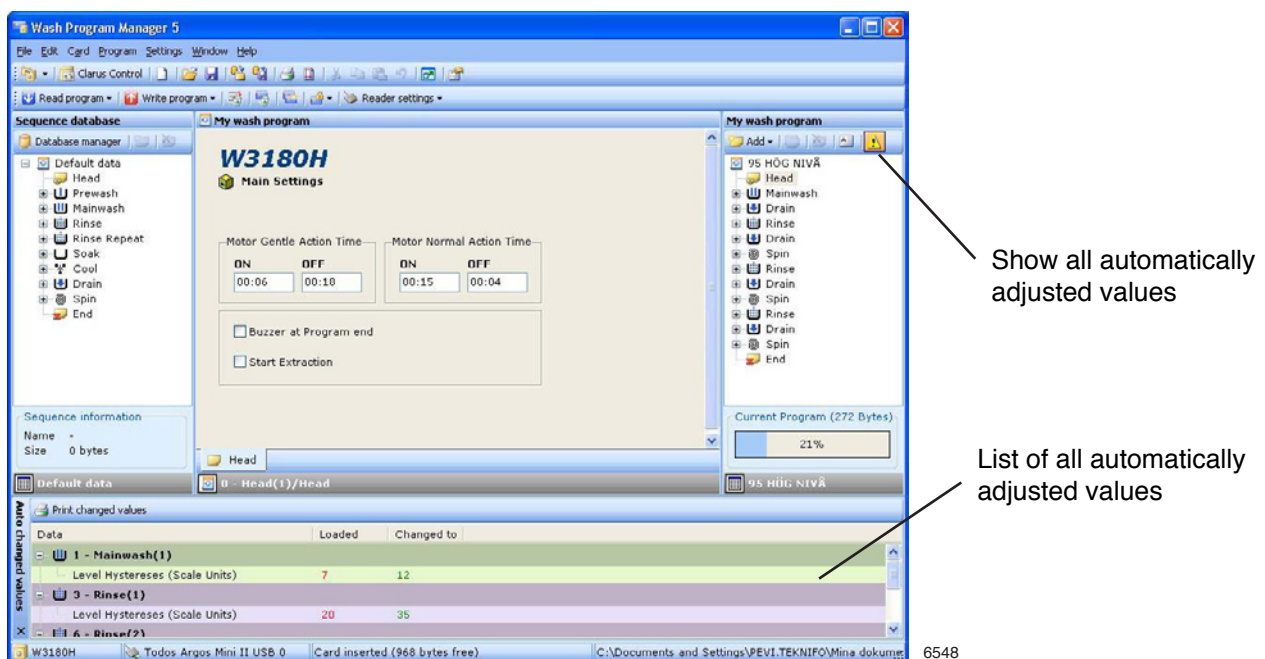
6552

## Troubleshooting

### General

Maximum and/or minimum values outside the limit values for the relevant machine.

The program has automatically adjusted maximum and minimum limit values.



- Click the "Show all automatically adjusted values" button
- Check and amend as required.

### Note

**The program must be saved in order for the adjusted values (including those adjusted automatically) to apply.**

No machine files in dialog box

- Install machine files in accordance with the instructions set out in "Installation of machine files".



## Clarus Control

### Defective card

The error may be caused by:

- A defective card or by the card being incorrectly inserted in the card reader (upside down).

Action:

Try removing the card from the reader and re-inserting it.

- Poor contact in the card reader.

Action:

Try removing the card from the reader and re-inserting it.

- Card reader incorrectly configured or not detected by the computer's operating system (Windows). When the card reader is active, one of its LEDs should be lit. When a memory card is inserted, both LEDs on the card reader should be lit.

Action:

- Close WPM.
- Remove the memory card from the card reader and disconnect the reader from the USB port.
- Wait 1 minute.
- Connect the card reader to the USB port.
- Launch WPM
- Select Todos ARGOS Mini card reader from the Memory Card menu.
- Insert the card in the reader and try again.
- Wrong drivers installed.

Action:

Uninstall the card reader and reinstall the drivers from the WPM CD-ROM.

- WPM cannot find the card reader.

Action:

Re-select the card reader in WPM using the following procedure:

- Remove the card
- Select virtual reader
- Select update reader
- Select Todos Argos Mini
- Insert the memory card.

If none of the above procedures correct the problem, the card is probably defective. Try re-formatting the card.

### Note

**All data held on the memory card will be lost during formatting.**

WPM cannot read the card.

The error may be caused by:

- Windows losing contact with the USB port. Depending on the level of activity on the USB port or if, for example, there has been a temporary break in communication between the reader and the computer, everything may appear to be OK but WPM cannot read the memory card. Depending on the length of the break, the LEDs on the card reader usually go out and the card reader icon will be marked with a stop symbol.

Action:

- Close WPM.
- Remove the memory card from the card reader and disconnect the reader from the USB port.
- Wait 1 minute.
- Connect the card reader to the USB port.
- Launch WPM
- Select Todos ARGOS Mini card reader from the Memory Card menu.
- Insert the card in the reader and try again.

- Wrong drivers installed.

Action:

Uninstall the card reader and reinstall the drivers from the WPM CD-ROM.

- The card reader may be defective.

Action:

Replace the card reader and try again.

Wrong card reader drivers installed.

### Note

**Electrolux can only guarantee card reader function using the drivers included on the WPM CD-ROM.**

**Electrolux cannot guarantee the functionality of drivers downloaded from supplier websites or via Microsoft Update.**

Uninstall the card reader and install the drivers held on the WPM CD-ROM.

## Compass Control

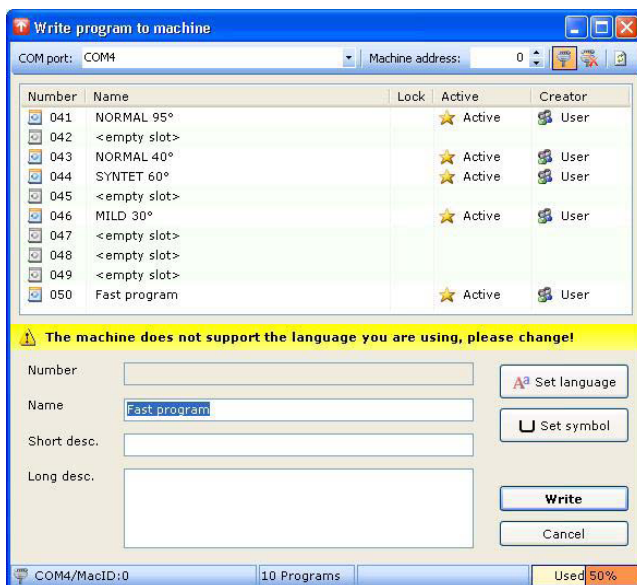
### Custom programs disappear during software updates

When updating software in Compass Control program devices, custom programs always become inactive. To activate custom programs, refer to the service manual for the relevant machine.

#### Note

If you, when implementing software updates, have selected to delete custom programs, they will be permanently deleted; refer to the Compass Control Loader manual.

The program device does not support the language you selected in your program



6554

You have selected a language that is not supported by the program device.

#### Action:

- Open the **Cable** menu and select **Write program to machine** (or click the Write program button in the toolbar).
- Click **Select language** and select a language from the list (list only contains languages supported by the program device).

## Communication timeout



6555

WPM is unable to establish contact with the program device within a given time limit. The error may be caused by:

- Cable incorrectly connected to PC or program device.
- Wrong com port selected.
- Wrong machine address selected
- Program device base software does not support WPM.







[www.electrolux.com/professional](http://www.electrolux.com/professional)

Share more of our thinking at [www.electrolux.com](http://www.electrolux.com)